

Datasheet for ABIN1341524

**ICAM1 (Human) IP-WB Antibody Pair**[Go to Product page](#)**1** Image

## Overview

Quantity:	1 set
Target:	ICAM1
Reactivity:	Human
Host:	Rabbit, Mouse
Application:	Immunoprecipitation (IP)

## Product Details

Purpose:	This IP-WB antibody pair set comes with one antibody for immunoprecipitation and another to detect the precipitated protein in western blot.
Cross-Reactivity:	Human
Characteristics:	This IP-WB antibody pair set comes with one antibody for immunoprecipitation and another to detect the precipitated protein in western blot.
Components:	Antibody pair set content: 1. Antibody pair for IP: mouse monoclonal anti-ICAM1 (300 µg) 2. Antibody pair for WB: rabbit polyclonal anti-ICAM1 (50 µL)

## Target Details

Target:	ICAM1
Alternative Name:	ICAM1 ( <a href="#">ICAM1 Products</a> )
Sub Type:	Cocktail
Target Type:	Viral Protein

## Target Details

Background: Full Gene Name: intercellular adhesion molecule 1  
Synonyms: BB2,CD54,P3.58

Gene ID: 3383

## Application Details

Application Notes: Optimal working dilution should be determined by the investigator.

Restrictions: For Research Use only

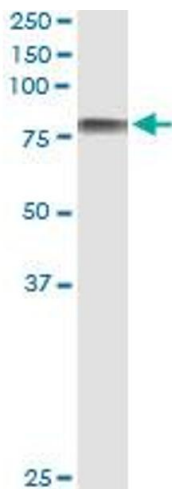
## Handling

Handling Advice: Please aliquot to avoid repeated freeze thaw cycle.

Storage: -20 °C

Storage Comment: Store reagents of the antibody pair set at -20°C or lower. Please aliquot to avoid repeated freeze thaw cycle. Reagents should be returned to -20°C storage immediately after use.

## Images



### Western Blotting

**Image 1.** Immunoprecipitation of ICAM1 transfected lysate using mouse monoclonal anti-ICAM1 and Protein A Magnetic Bead