

Datasheet for ABIN1341525

ICAM4 (Human) IP-WB Antibody Pair[Go to Product page](#)**1** Image

Overview

| | |
|--------------|--------------------------|
| Quantity: | 1 set |
| Target: | ICAM4 |
| Reactivity: | Human |
| Host: | Rabbit, Mouse |
| Application: | Immunoprecipitation (IP) |

Product Details

| | |
|-------------------|---|
| Purpose: | This IP-WB antibody pair set comes with one antibody for immunoprecipitation and another to detect the precipitated protein in western blot. |
| Cross-Reactivity: | Human |
| Characteristics: | This IP-WB antibody pair set comes with one antibody for immunoprecipitation and another to detect the precipitated protein in western blot. |
| Components: | Antibody pair set content: 1. Antibody pair for IP: rabbit polyclonal anti-ICAM4 (300 µL) 2. Antibody pair for WB: mouse purified polyclonal anti-ICAM4 (50 µg) |

Target Details

| | |
|-------------------|--|
| Target: | ICAM4 |
| Alternative Name: | ICAM4 (ICAM4 Products) |
| Sub Type: | Cocktail |
| Background: | Full Gene Name: intercellular adhesion molecule 4 (Landsteiner-Wiener blood group) |

Target Details

| | |
|----------|--------------------|
| | Synonyms: CD242,LW |
| Gene ID: | 3386 |

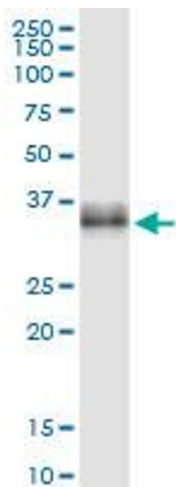
Application Details

| | |
|--------------------|--|
| Application Notes: | Optimal working dilution should be determined by the investigator. |
| Restrictions: | For Research Use only |

Handling

| | |
|------------------|--|
| Handling Advice: | Please aliquot to avoid repeated freeze thaw cycle. |
| Storage: | -20 °C |
| Storage Comment: | Store reagents of the antibody pair set at -20°C or lower. Please aliquot to avoid repeated freeze thaw cycle. Reagents should be returned to -20°C storage immediately after use. |

Images



Western Blotting

Image 1. Immunoprecipitation of ICAM4 transfected lysate using rabbit polyclonal anti-ICAM4 and Protein A Magnetic Bead