

Datasheet for ABIN1341532

**IFI16 (Human) IP-WB Antibody Pair**[Go to Product page](#)**1** Image

## Overview

Quantity:	1 set
Target:	IFI16
Reactivity:	Human
Host:	Rabbit, Mouse
Application:	Immunoprecipitation (IP)

## Product Details

Purpose:	This IP-WB antibody pair set comes with one antibody for immunoprecipitation and another to detect the precipitated protein in western blot.
Cross-Reactivity:	Human
Characteristics:	This IP-WB antibody pair set comes with one antibody for immunoprecipitation and another to detect the precipitated protein in western blot.
Components:	Antibody pair set content: 1. Antibody pair for IP: rabbit polyclonal anti-IFI16 (300 µL) 2. Antibody pair for WB: mouse purified polyclonal anti-IFI16 (50 µg)

## Target Details

Target:	IFI16
Alternative Name:	IFI16 ( <a href="#">IFI16 Products</a> )
Sub Type:	Cocktail
Background:	Full Gene Name: interferon, gamma-inducible protein 16

Target Details

	Synonyms: IFNGIP1,MGC9466,PYHIN2
Gene ID:	3428

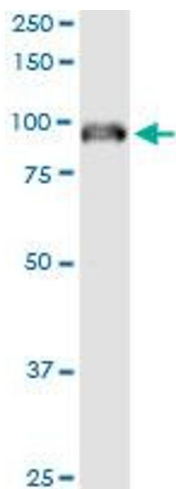
Application Details

Application Notes:	Optimal working dilution should be determined by the investigator.
Restrictions:	For Research Use only

Handling

Handling Advice:	Please aliquot to avoid repeated freeze thaw cycle.
Storage:	-20 °C
Storage Comment:	Store reagents of the antibody pair set at -20°C or lower. Please aliquot to avoid repeated freeze thaw cycle. Reagents should be returned to -20°C storage immediately after use.

Images



**Western Blotting**

**Image 1.** Immunoprecipitation of IFI16 transfected lysate using rabbit polyclonal anti-IFI16 and Protein A Magnetic Bead