

Datasheet for ABIN1341648  
**KIT (Human) Matched Antibody Pair**



[Go to Product page](#)

2 Images

## Overview

Quantity: 1 set

Target: KIT

Reactivity: Human

Host: Mouse

Application: ELISA

## Product Details

Purpose: This antibody pair set comes with matched antibody pair to detect and quantify protein level of human KIT.

Cross-Reactivity: Human

Characteristics: This antibody pair set comes with matched antibody pair to detect and quantify protein level of human KIT.

Components: Antibody pair set content:  
1. Capture antibody: mouse monoclonal anti-KIT (100 µg)  
2. Detection antibody: biotinylated mouse monoclonal anti-KIT, IgG1 Kappa (50 µg)  
\*Reagents are sufficient for at least 3-5 x 96 well plates using recommended protocols.

## Target Details

Target: KIT

Alternative Name: KIT ([KIT Products](#))

Sub Type: Cocktail

## Target Details

Background:	Full Gene Name: v-kit Hardy-Zuckerman 4 feline sarcoma viral oncogene homolog Synonyms: C-Kit,CD117,PBT,SCFR
Gene ID:	3815

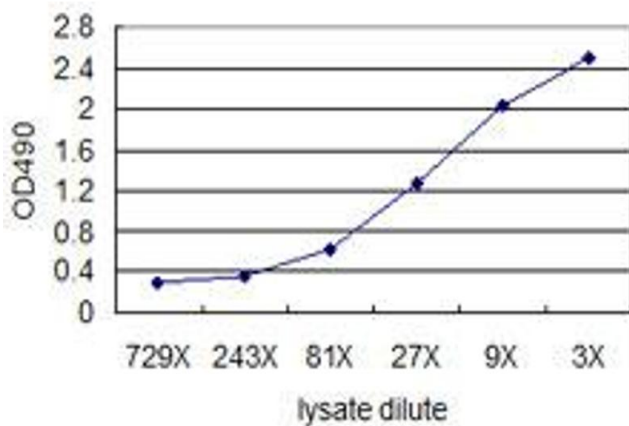
## Application Details

Application Notes:	Optimal working dilution should be determined by the investigator.
Restrictions:	For Research Use only

## Handling

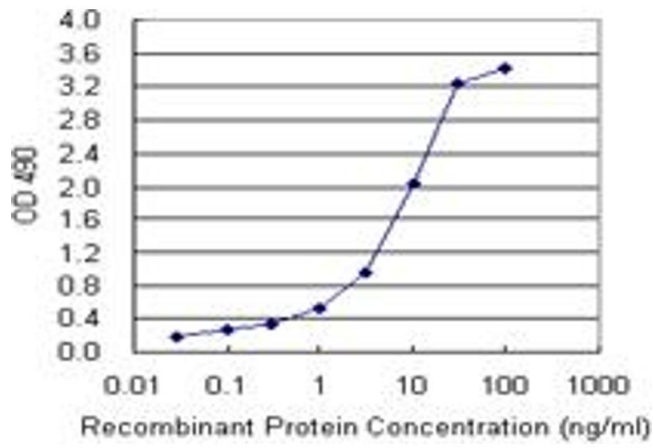
Handling Advice:	Please aliquot to avoid repeated freeze thaw cycle.
Storage:	-20 °C
Storage Comment:	Store reagents of the antibody pair set at -20°C or lower. Please aliquot to avoid repeated freeze thaw cycle. Reagents should be returned to -20°C storage immediately after use.

## Images



### ELISA

**Image 1.** Standard curve using 293T overexpression lysate (non-denatured) as an analyte. Sandwich ELISA detection sensitivity ranging from approximately 243x to 3x dilution of the 293T overexpression lysate (non-denatured).



## ELISA

**Image 2.** Sandwich ELISA detection sensitivity ranging from 0.1 ng/mL to 100 ng/mL.