

Datasheet for ABIN1341795

MUC1 (Human) Matched Antibody Pair**2** Images[Go to Product page](#)

Overview

Quantity:	1 set
Target:	MUC1
Reactivity:	Human
Host:	Mouse
Application:	ELISA

Product Details

Purpose:	This antibody pair set comes with matched antibody pair to detect and quantify protein level of human MUC1.
Cross-Reactivity:	Human
Characteristics:	This antibody pair set comes with matched antibody pair to detect and quantify protein level of human MUC1.
Components:	<p>Antibody pair set content:</p> <ol style="list-style-type: none">Capture antibody: mouse monoclonal anti-MUC1, IgG2a Kappa (100 µg)Detection antibody: biotinylated mouse monoclonal anti-MUC1, IgG2b Kappa (50 µg) <p>*Reagents are sufficient for at least 3-5 x 96 well plates using recommended protocols.</p>

Target Details

Target:	MUC1
Alternative Name:	MUC1 (MUC1 Products)
Sub Type:	Cocktail

Target Details

Background:	Full Gene Name: mucin 1, cell surface associated Synonyms: CD227,EMA,H23AG,MAM6,PEM,PEMT,PUM
Gene ID:	4582

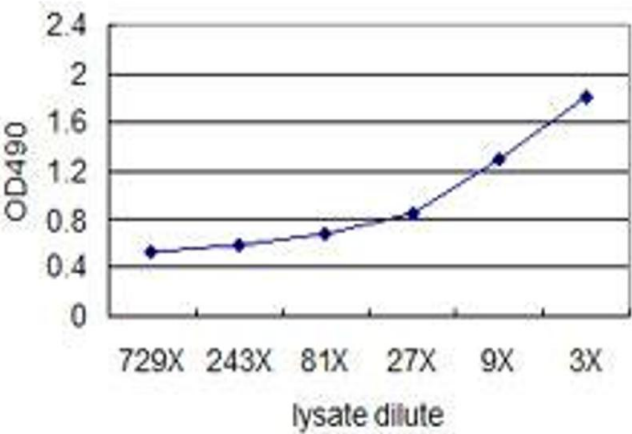
Application Details

Application Notes:	Optimal working dilution should be determined by the investigator.
Restrictions:	For Research Use only

Handling

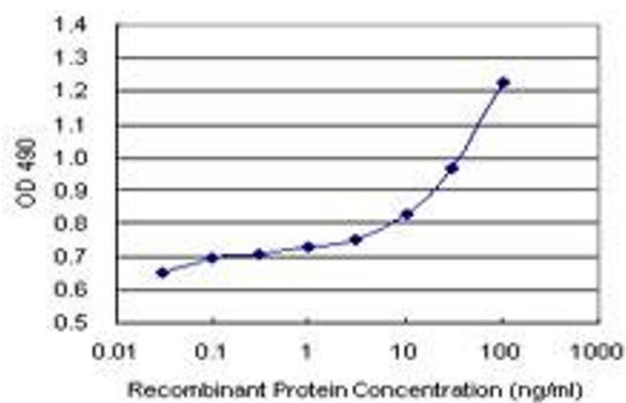
Handling Advice:	Please aliquot to avoid repeated freeze thaw cycle.
Storage:	-20 °C
Storage Comment:	Store reagents of the antibody pair set at -20°C or lower. Please aliquot to avoid repeated freeze thaw cycle. Reagents should be returned to -20°C storage immediately after use.

Images



ELISA

Image 1. Standard curve using MUC1 293T overexpression lysate (non-denatured) as an analyte. Sandwich ELISA detection sensitivity ranging from approximately 27x to 3x dilution of the MUC1 293T overexpression lysate (non-denatured).



ELISA

Image 2. Sandwich ELISA detection sensitivity ranging from 3 ng/mL to 100 ng/mL.