

Datasheet for ABIN1341911

## PCK1 (Human) IP-WB Antibody Pair



[Go to Product page](#)

### 1 Image

#### Overview

Quantity:	1 set
Target:	PCK1
Reactivity:	Human
Host:	Rabbit, Mouse
Application:	Immunoprecipitation (IP)

#### Product Details

Purpose:	This IP-WB antibody pair set comes with one antibody for immunoprecipitation and another to detect the precipitated protein in western blot.
Cross-Reactivity:	Human
Characteristics:	This IP-WB antibody pair set comes with one antibody for immunoprecipitation and another to detect the precipitated protein in western blot.
Components:	<p>Antibody pair set content:</p> <ol style="list-style-type: none"> <li>1. Antibody pair for IP: mouse monoclonal anti-PCK1 (300 µg)</li> <li>2. Antibody pair for WB: rabbit polyclonal anti-PCK1 (50 µL)</li> </ol>

#### Target Details

Target:	PCK1
Alternative Name:	PCK1 ( <a href="#">PCK1 Products</a> )
Sub Type:	Cocktail
Background:	Full Gene Name: phosphoenolpyruvate carboxykinase 1 (soluble)

Target Details

	Synonyms: MGC22652,PEPCK-C,PEPCK1,PEPCKC
Gene ID:	5105

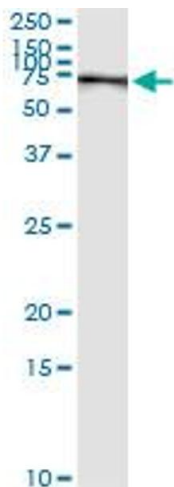
Application Details

Application Notes:	Optimal working dilution should be determined by the investigator.
Restrictions:	For Research Use only

Handling

Handling Advice:	Please aliquot to avoid repeated freeze thaw cycle.
Storage:	-20 °C
Storage Comment:	Store reagents of the antibody pair set at -20°C or lower. Please aliquot to avoid repeated freeze thaw cycle. Reagents should be returned to -20°C storage immediately after use.

Images



**Western Blotting**

**Image 1.** Immunoprecipitation of PCK1 transfected lysate using mouse monoclonal anti-PCK1 and Protein A Magnetic Bead