

Datasheet for ABIN1341939

PF4 (Human) IP-WB Antibody Pair[Go to Product page](#)**1** Image

Overview

Quantity:	1 set
Target:	PF4
Reactivity:	Human
Host:	Rabbit, Mouse
Application:	Immunoprecipitation (IP)

Product Details

Purpose:	This IP-WB antibody pair set comes with one antibody for immunoprecipitation and another to detect the precipitated protein in western blot.
Cross-Reactivity:	Human
Characteristics:	This IP-WB antibody pair set comes with one antibody for immunoprecipitation and another to detect the precipitated protein in western blot.
Components:	Antibody pair set content: <ol style="list-style-type: none">1. Antibody pair for IP: mouse monoclonal anti-PF4 (300 µg)2. Antibody pair for WB: rabbit polyclonal anti-PF4 (50 µL)

Target Details

Target:	PF4
Alternative Name:	PF4 (PF4 Products)
Sub Type:	Cocktail
Background:	Full Gene Name: platelet factor 4

Target Details

Synonyms: CXCL4,MGC138298,SCYB4

Gene ID: 5196

Application Details

Application Notes: Optimal working dilution should be determined by the investigator.

Restrictions: For Research Use only

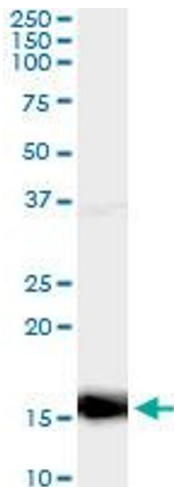
Handling

Handling Advice: Please aliquot to avoid repeated freeze thaw cycle.

Storage: -20 °C

Storage Comment: Store reagents of the antibody pair set at -20°C or lower. Please aliquot to avoid repeated freeze thaw cycle. Reagents should be returned to -20°C storage immediately after use.

Images



Western Blotting

Image 1. Immunoprecipitation of PF4 transfected lysate using mouse monoclonal anti-PF4 and Protein A Magnetic Bead