



[Go to Product page](#)

Datasheet for ABIN1342109

## RAD51 (Human) Matched Antibody Pair

1 Image

1 Publication

### Overview

Quantity: 1 set

Target: RAD51

Reactivity: Human

Host: Rabbit, Mouse

Application: ELISA

### Product Details

Purpose: This antibody pair set comes with matched antibody pair to detect and quantify protein level of human RAD51.

Cross-Reactivity: Human

Characteristics: This antibody pair set comes with matched antibody pair to detect and quantify protein level of human RAD51.

Components: Antibody pair set content:

1. Capture antibody: rabbit affinity purified polyclonal anti-RAD51 (100 µg)

2. Detection antibody: mouse monoclonal anti-RAD51, IgG1 Kappa (20 µg)

\*Reagents are sufficient for at least 1-2 x 96 well plates using recommended protocols.

### Target Details

Target: RAD51

Alternative Name: RAD51 ([RAD51 Products](#))

Sub Type: Cocktail

## Target Details

Background:	Full Gene Name: RAD51 homolog (RecA homolog, E. coli) (S. cerevisiae) Synonyms: BRCC5,HRAD51,HsRad51,HsT16930,RAD51A,RECA
Gene ID:	5888

## Application Details

Application Notes:	Optimal working dilution should be determined by the investigator.
Restrictions:	For Research Use only

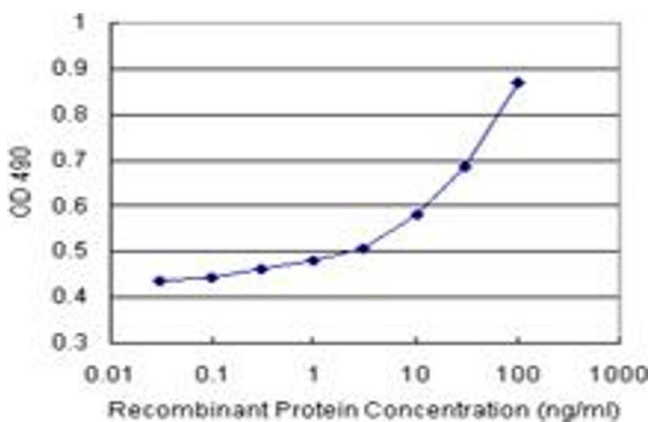
## Handling

Handling Advice:	Please aliquot to avoid repeated freeze thaw cycle.
Storage:	-20 °C
Storage Comment:	Store reagents of the antibody pair set at -20°C or lower. Please aliquot to avoid repeated freeze thaw cycle. Reagents should be returned to -20°C storage immediately after use.

## Publications

Product cited in:	Cheng, Yang, Xi, Chen: "RAD51B as a potential biomarker for early detection and poor prognostic evaluation contributes to tumorigenesis of gastric cancer." in: <b>Tumour biology</b> , Vol. 37, Issue 11, pp. 14969-14978, (2016) ( <a href="#">PubMed</a> ).
-------------------	--

## Images



### ELISA

**Image 1.** Sandwich ELISA detection sensitivity ranging from 3 ng/mL to 100 ng/mL.