



[Go to Product page](#)

Datasheet for ABIN1342333

TAGLN (Human) Matched Antibody Pair

2 Images

Overview

Quantity: 1 set

Target: Transgelin (TAGLN)

Reactivity: Human

Host: Mouse

Application: ELISA

Product Details

Purpose: This antibody pair set comes with matched antibody pair to detect and quantify protein level of human TAGLN.

Cross-Reactivity: Human

Characteristics: This antibody pair set comes with matched antibody pair to detect and quantify protein level of human TAGLN.

Components: Antibody pair set content:
1. Capture antibody: mouse monoclonal anti-TAGLN (100 µg)
2. Detection antibody: biotinylated mouse monoclonal anti-TAGLN, IgG2a Kappa (50 µg)
*Reagents are sufficient for at least 3-5 x 96 well plates using recommended protocols.

Target Details

Target: Transgelin (TAGLN)

Alternative Name: TAGLN ([TAGLN Products](#))

Sub Type: Cocktail

Target Details

Background:	Full Gene Name: transgelin Synonyms: DKFZp686P11128,SM22,SMCC,TAGLN1,WS3-10
Gene ID:	6876

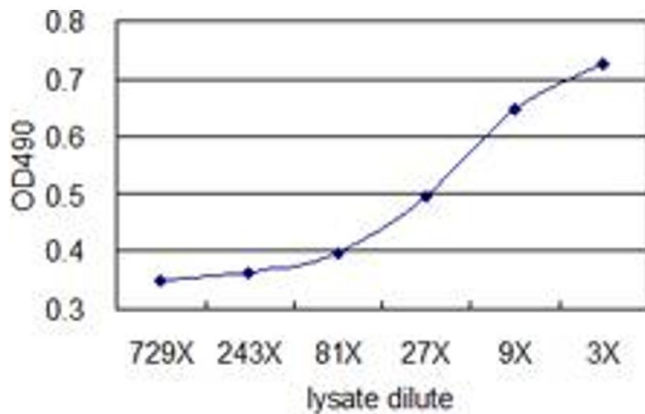
Application Details

Application Notes:	Optimal working dilution should be determined by the investigator.
Restrictions:	For Research Use only

Handling

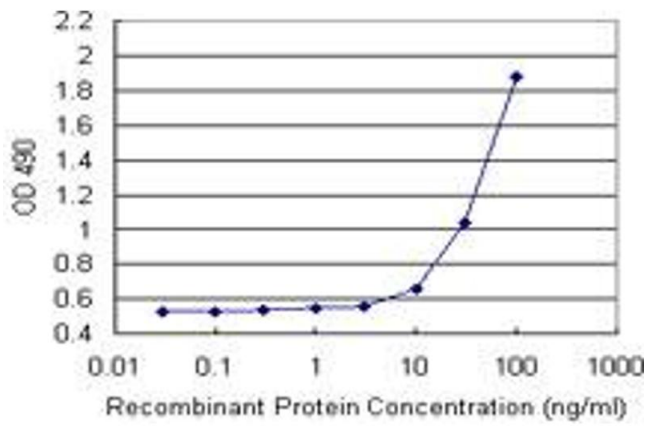
Handling Advice:	Please aliquot to avoid repeated freeze thaw cycle.
Storage:	-20 °C
Storage Comment:	Store reagents of the antibody pair set at -20°C or lower. Please aliquot to avoid repeated freeze thaw cycle. Reagents should be returned to -20°C storage immediately after use.

Images



ELISA

Image 1. Standard curve using TAGLN 293T overexpression lysate (non-denatured) as an analyte. Sandwich ELISA detection sensitivity ranging from approximately 27x to 3x dilution of the TAGLN 293T overexpression lysate (non-denatured).



ELISA

Image 2. Sandwich ELISA detection sensitivity ranging from 10 ng/mL to 100 ng/mL.