



[Go to Product page](#)

Datasheet for ABIN1343304

GOLGA7 (Human) IP-WB Antibody Pair

1 Image

Overview

Quantity:	1 set
Target:	Golgin A7 (GOLGA7)
Reactivity:	Human
Host:	Mouse
Application:	Immunoprecipitation (IP)

Product Details

Purpose:	This IP-WB antibody pair set comes with one antibody for immunoprecipitation and another to detect the precipitated protein in western blot.
Cross-Reactivity:	Human
Characteristics:	This IP-WB antibody pair set comes with one antibody for immunoprecipitation and another to detect the precipitated protein in western blot.
Components:	Antibody pair set content: 1. Antibody pair for IP: mouse monoclonal anti-GOLGA7 (300 µg) 2. Antibody pair for WB: mouse monoclonal anti-GOLGA7 (50 µg)

Target Details

Target:	Golgin A7 (GOLGA7)
Alternative Name:	GOLGA7 (GOLGA7 Products)
Sub Type:	Cocktail
Background:	Full Gene Name: golgi autoantigen, golgin subfamily a, 7

Target Details

Synonyms: GCP16,GOLGA3AP1,GOLGA7A,HSPC041,MGC21096,MGC4876

Gene ID: 51125

Application Details

Application Notes: Optimal working dilution should be determined by the investigator.

Restrictions: For Research Use only

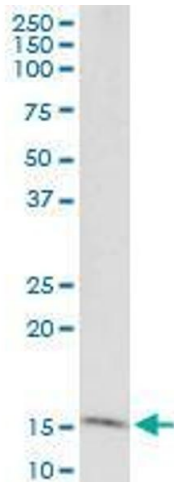
Handling

Handling Advice: Please aliquot to avoid repeated freeze thaw cycle.

Storage: -20 °C

Storage Comment: Store reagents of the antibody pair set at -20°C or lower. Please aliquot to avoid repeated freeze thaw cycle. Reagents should be returned to -20°C storage immediately after use.

Images



Western Blotting

Image 1. Immunoprecipitation of GOLGA7 transfected lysate using mouse monoclonal anti-GOLGA7 and Protein A Magnetic Bead