



[Go to Product page](#)

Datasheet for ABIN1343306

PHF11 (Human) Matched Antibody Pair

1 Image

Overview

Quantity: 1 set

Target: PHF11

Reactivity: Human

Host: Rabbit, Mouse

Application: ELISA

Product Details

Purpose: This antibody pair set comes with matched antibody pair to detect and quantify protein level of human PHF11.

Cross-Reactivity: Human

Characteristics: This antibody pair set comes with matched antibody pair to detect and quantify protein level of human PHF11.

Components: Antibody pair set content:

1. Capture antibody: rabbit affinity purified polyclonal anti-PHF11 (100 µg)
2. Detection antibody: mouse monoclonal anti-PHF11, IgG2a Kappa (20 µg)

*Reagents are sufficient for at least 1-2 x 96 well plates using recommended protocols.

Target Details

Target: PHF11

Alternative Name: PHF11 ([PHF11 Products](#))

Sub Type: Cocktail

Target Details

Background:	Full Gene Name: PHD finger protein 11 Synonyms: APY,BCAP,IGEL,IGER,IGHER,NY-REN-34,NYREN34
Gene ID:	51131

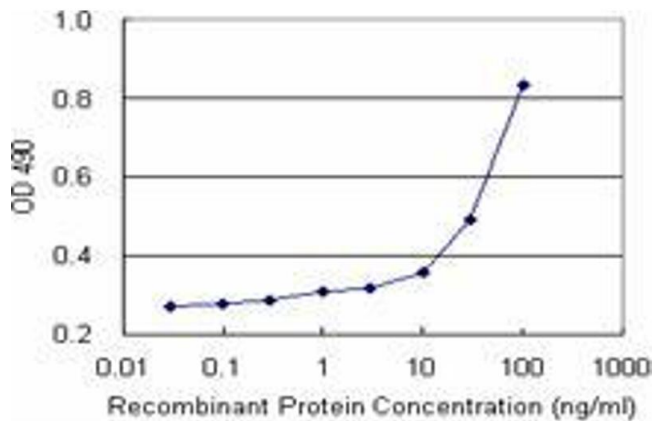
Application Details

Application Notes:	Optimal working dilution should be determined by the investigator.
Restrictions:	For Research Use only

Handling

Handling Advice:	Please aliquot to avoid repeated freeze thaw cycle.
Storage:	-20 °C
Storage Comment:	Store reagents of the antibody pair set at -20°C or lower. Please aliquot to avoid repeated freeze thaw cycle. Reagents should be returned to -20°C storage immediately after use.

Images



ELISA

Image 1. Sandwich ELISA detection sensitivity ranging from 10 ng/mL to 100 ng/mL.