

Datasheet for ABIN1343307

## PHF11 (Human) Matched Antibody Pair



[Go to Product page](#)

### 1 Image

#### Overview

Quantity: 1 set

Target: PHF11

Reactivity: Human

Host: Rabbit, Mouse

Application: ELISA

#### Product Details

Purpose: This antibody pair set comes with matched antibody pair to detect and quantify protein level of human PHF11.

Cross-Reactivity: Human

Characteristics: This antibody pair set comes with matched antibody pair to detect and quantify protein level of human PHF11.

Components: Antibody pair set content:  
1. Capture antibody: rabbit affinity purified polyclonal anti-PHF11 (100 µg)  
2. Detection antibody: mouse purified polyclonal anti-PHF11 (20 µg)  
\*Reagents are sufficient for at least 1-2 x 96 well plates using recommended protocols.

#### Target Details

Target: PHF11

Alternative Name: PHF11 ([PHF11 Products](#))

Sub Type: Cocktail

## Target Details

Background:	Full Gene Name: PHD finger protein 11 Synonyms: APY,BCAP,IGEL,IGER,IGHER,NY-REN-34,NYREN34
Gene ID:	51131

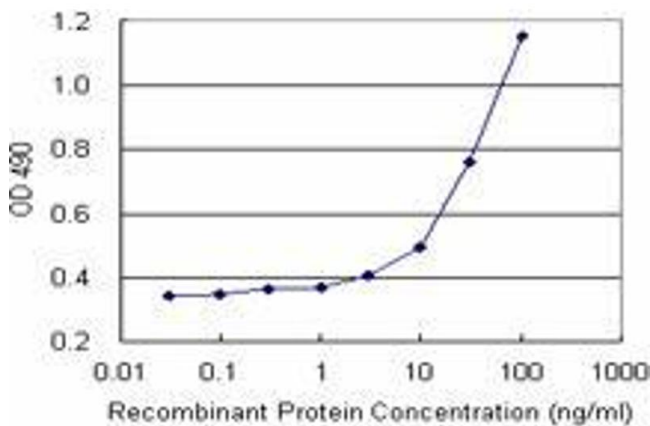
## Application Details

Application Notes:	Optimal working dilution should be determined by the investigator.
Restrictions:	For Research Use only

## Handling

Handling Advice:	Please aliquot to avoid repeated freeze thaw cycle.
Storage:	-20 °C
Storage Comment:	Store reagents of the antibody pair set at -20°C or lower. Please aliquot to avoid repeated freeze thaw cycle. Reagents should be returned to -20°C storage immediately after use.

## Images



### ELISA

**Image 1.** Sandwich ELISA detection sensitivity ranging from 3 ng/mL to 100 ng/mL.