

Datasheet for ABIN1343317

**EGFL7 (Human) IP-WB Antibody Pair**[Go to Product page](#)**1** Image

## Overview

Quantity:	1 set
Target:	EGFL7
Reactivity:	Human
Host:	Rabbit, Mouse
Application:	Immunoprecipitation (IP)

## Product Details

Purpose:	This IP-WB antibody pair set comes with one antibody for immunoprecipitation and another to detect the precipitated protein in western blot.
Cross-Reactivity:	Human
Characteristics:	This IP-WB antibody pair set comes with one antibody for immunoprecipitation and another to detect the precipitated protein in western blot.
Components:	Antibody pair set content: 1. Antibody pair for IP: rabbit polyclonal anti-EGFL7 (300 µL) 2. Antibody pair for WB: mouse purified polyclonal anti-EGFL7 (50 µg)

## Target Details

Target:	EGFL7
Alternative Name:	EGFL7 ( <a href="#">EGFL7 Products</a> )
Background:	Full Gene Name: EGF-like-domain, multiple 7 Synonyms: MGC111117,RP11-251M1.2,VE-STATIN,ZNEU1

## Target Details

Gene ID: 51162

## Application Details

Application Notes: Optimal working dilution should be determined by the investigator.

Restrictions: For Research Use only

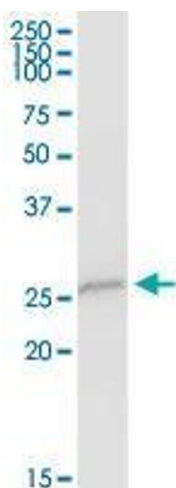
## Handling

Handling Advice: Please aliquot to avoid repeated freeze thaw cycle.

Storage: -20 °C

Storage Comment: Store reagents of the antibody pair set at -20°C or lower. Please aliquot to avoid repeated freeze thaw cycle. Reagents should be returned to -20°C storage immediately after use.

## Images



### Western Blotting

**Image 1.** Immunoprecipitation of EGFL7 transfected lysate using rabbit polyclonal anti-EGFL7 and Protein A Magnetic Bead