



[Go to Product page](#)

Datasheet for ABIN1343319

## TUBD1 (Human) IP-WB Antibody Pair

### 1 Image

#### Overview

Quantity:	1 set
Target:	TUBD1
Reactivity:	Human
Host:	Rabbit
Application:	Immunoprecipitation (IP)

#### Product Details

Purpose:	This IP-WB antibody pair set comes with one antibody for immunoprecipitation and another to detect the precipitated protein in western blot.
Cross-Reactivity:	Human
Characteristics:	This IP-WB antibody pair set comes with one antibody for immunoprecipitation and another to detect the precipitated protein in western blot.
Components:	Antibody pair set content: 1. Antibody pair for IP: rabbit polyclonal anti-TUBD1 (300 µL) 2. Antibody pair for WB: rabbit polyclonal anti-TUBD1 (50 µL)

#### Target Details

Target:	TUBD1
Alternative Name:	TUBD1 ( <a href="#">TUBD1 Products</a> )
Sub Type:	Cocktail
Background:	Full Gene Name: tubulin, delta 1

## Target Details

Synonyms: FLJ12709,TUBD

Gene ID: 51174

## Application Details

Application Notes: Optimal working dilution should be determined by the investigator.

Restrictions: For Research Use only

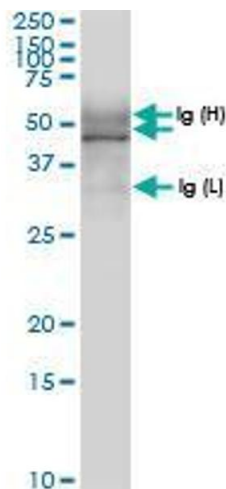
## Handling

Handling Advice: Please aliquot to avoid repeated freeze thaw cycle.

Storage: -20 °C

Storage Comment: Store reagents of the antibody pair set at -20°C or lower. Please aliquot to avoid repeated freeze thaw cycle. Reagents should be returned to -20°C storage immediately after use.

## Images



### Western Blotting

**Image 1.** Immunoprecipitation of TUBD1 transfected lysate using rabbit polyclonal anti-TUBD1 and Protein A Magnetic Bead