



[Go to Product page](#)

Datasheet for ABIN1343330

CLEC1B (Human) IP-WB Antibody Pair

1 Image

Overview

Quantity:	1 set
Target:	C-Type Lectin Domain Family 1, Member B (CLEC1B)
Reactivity:	Human
Host:	Rabbit, Mouse
Application:	Immunoprecipitation (IP)

Product Details

Purpose:	This IP-WB antibody pair set comes with one antibody for immunoprecipitation and another to detect the precipitated protein in western blot.
Cross-Reactivity:	Human
Characteristics:	This IP-WB antibody pair set comes with one antibody for immunoprecipitation and another to detect the precipitated protein in western blot.
Components:	Antibody pair set content: 1. Antibody pair for IP: mouse monoclonal anti-CLEC1B (300 µg) 2. Antibody pair for WB: rabbit polyclonal anti-CLEC1B (50 µL)

Target Details

Target:	C-Type Lectin Domain Family 1, Member B (CLEC1B)
Alternative Name:	CLEC1B (CLEC1B Products)
Sub Type:	Cocktail
Target Type:	Viral Protein

Target Details

Background:	Full Gene Name: C-type lectin domain family 1, member B Synonyms: 1810061I13Rik,CLEC2,CLEC2B,PRO1384,QDED721
Gene ID:	51266

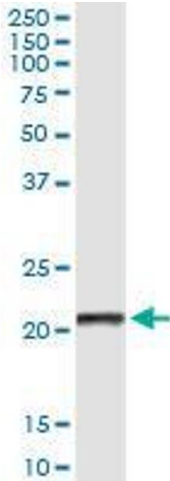
Application Details

Application Notes:	Optimal working dilution should be determined by the investigator.
Restrictions:	For Research Use only

Handling

Handling Advice:	Please aliquot to avoid repeated freeze thaw cycle.
Storage:	-20 °C
Storage Comment:	Store reagents of the antibody pair set at -20°C or lower. Please aliquot to avoid repeated freeze thaw cycle. Reagents should be returned to -20°C storage immediately after use.

Images



Western Blotting

Image 1. Immunoprecipitation of CLEC1B transfected lysate using mouse monoclonal anti-CLEC1B and Protein A Magnetic Bead