



[Go to Product page](#)

Datasheet for ABIN1344482

## ADPRHL2 Protein (AA 1-363) (GST tag)

### 1 Image

#### Overview

Quantity:	10 µg
Target:	ADPRHL2
Protein Characteristics:	AA 1-363
Origin:	Human
Source:	Wheat germ
Protein Type:	Recombinant
Purification tag / Conjugate:	This ADPRHL2 protein is labelled with GST tag.
Application:	ELISA, Western Blotting (WB), Antibody Array (AA), Affinity Purification (AP)

#### Product Details

Purpose:	ADPRHL2 (Human) Recombinant Protein (P01)
Sequence:	<p>MAAAAMAAAA GGGAGAARSL SRFRGCLAGA LLGDCVGSFY EAHDTVDLTS VLRHVQSLEP                  DPGTPGSERT EALYYTDDTA MARALVQSLL AKEAFDEVDM AHRFAQEYKK DPDRGYGAGV                  VTVFKLLNP KCRDVFEPAR AQFNGKGSYG NGGAMRVAGI SLAYSSVQDV QKFARLSAQL                  THASSLGYNG AILQALAVHL ALQGESSEH FLKQLLGHME DLEGDAQSVL DARELGMEER                  PYSSRLKKIG ELLDQASVTR EEVSELGNG IAAFESVPTA IYCFRLRCMEP DPEIPSAFNS                  LQRTLIIYSIS LGGDTDTIAT MAGAIAGAYY GMDQVPESWQ QSCEGYEETD ILAQLSHRVF QKS</p>
Characteristics:	Human ADPRHL2 full-length ORF ( NP_060295.1, 1 a.a. - 363 a.a.) recombinant protein with GST-tag at N-terminal.
Purification:	in vitro wheat germ expression system

## Target Details

Target:	ADPRHL2
Alternative Name:	ADPRHL2 ( <a href="#">ADPRHL2 Products</a> )
Background:	Full Gene Name: ADP-ribosylhydrolase like 2 Synonyms: ARH3,FLJ20446,dJ665N4.2
Gene ID:	54936
NCBI Accession:	<a href="#">NM_017825</a>

## Application Details

Application Notes:	Optimal working dilution should be determined by the investigator.
Comment:	Preparation method: in vitro, wheat germ expression system Product Quality tested by: 12.5% SDS-PAGE Stained with Coomassie Blue.
Restrictions:	For Research Use only

## Handling

Buffer:	50 mM Tris-HCl, 10 mM reduced Glutathione, pH =8.0 in the elution buffer.
Handling Advice:	Aliquot to avoid repeated freezing and thawing.
Storage:	-80 °C
Storage Comment:	Best use within three months from the date of receipt of this protein.

## Images

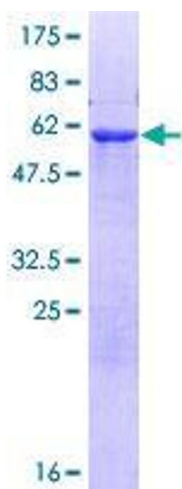


Image 1.