

Datasheet for ABIN1344506

ADSSL1 Protein (AA 1-457) (GST tag)



[Go to Product page](#)

1 Image

Overview

Quantity:	10 µg
Target:	ADSSL1
Protein Characteristics:	AA 1-457
Origin:	Human
Source:	Wheat germ
Protein Type:	Recombinant
Purification tag / Conjugate:	This ADSSL1 protein is labelled with GST tag.
Application:	ELISA, Western Blotting (WB), Antibody Array (AA), Affinity Purification (AP)

Product Details

Purpose:	ADSSL1 (Human) Recombinant Protein (P01)
Sequence:	MSGTRASNDR PPGAGGVKRG RLQQEAAATG SRVTVVLGAQ WGDEGKGVV DLLATDADII SRCQGGNNAG HTVVVDGKEY DFHLLPSGII NTKAVSFIGN GVVIHLPLGF EEAENEKKG LKDWEKRLII SDRAPLVFDF HQAVDGLQEV QRQAQEGKNI GTTKKGIGPT YSSKAARTGL RICDLLSDFD EFSSRFKNLA HQHQSMFPTL EIDIEGQLKR LKGFAERIRP MVRDGVVYFMY EALHGPPKKI LVEGANAAALL DIDFGTYPFV TSSNCTVGGV CTGLGIPPQN IGDVYGVVKA YTTRVGIGAF PTEQINEIGG LLQTRGHEWG VTTGRKRRCG WLDLMILRYA HMVNGFTALA LTKLDILDVL GEVKVGVSYK LNGKRIPYFP ANQEMLQKVE VEYETLPGWK ADTTGARRWE DLPPQAQNYI RFVENHVGVA VKWVGVGKSR ESMIQLF
Characteristics:	Human ADSSL1 full-length ORF (NP_689541.1, 1 a.a. - 457 a.a.) recombinant protein with GST-tag at N-terminal.

Product Details

Purification: in vitro wheat germ expression system

Target Details

Target: ADSSL1

Alternative Name: ADSSL1 ([ADSSL1 Products](#))

Background: Full Gene Name: adenylosuccinate synthase like 1
Synonyms: FLJ38602

Gene ID: 122622

NCBI Accession: [NM_152328](#)

Pathways: [Ribonucleoside Biosynthetic Process](#)

Application Details

Application Notes: Optimal working dilution should be determined by the investigator.

Comment: Preparation method: in vitro, wheat germ expression system
Product Quality tested by: 12.5% SDS-PAGE Stained with Coomassie Blue.

Restrictions: For Research Use only

Handling

Buffer: 50 mM Tris-HCl, 10 mM reduced Glutathione, pH =8.0 in the elution buffer.

Handling Advice: Aliquot to avoid repeated freezing and thawing.

Storage: -80 °C

Storage Comment: Best use within three months from the date of receipt of this protein.

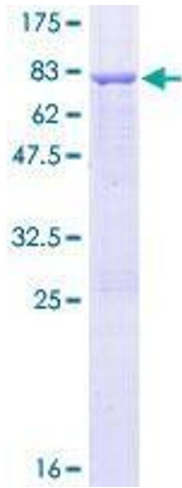


Image 1.