

Datasheet for ABIN1344512
AEBP2 Protein (AA 1-295) (GST tag)



[Go to Product page](#)

1 Image

Overview

Quantity:	25 µg
Target:	AEBP2
Protein Characteristics:	AA 1-295
Origin:	Human
Source:	Wheat germ
Protein Type:	Recombinant
Purification tag / Conjugate:	This AEBP2 protein is labelled with GST tag.
Application:	ELISA, Western Blotting (WB), Antibody Array (AA), Affinity Purification (AP)

Product Details

Purpose:	AEBP2 (Human) Recombinant Protein (P01)
Sequence:	MSSDGEPLSR MDESDSISST IMDVDSTISS GRSTPAMMNG QGSTTSSSKN IAYNCCWDQC QACFNSSPDL ADHIRSIHVD GQRGGVVFVCL WKGCKVYNTP STSQSWLQRH MLTHSGDKPF KCVVGGCNAS FASQGGLARH VPTHFSQQNS SKVSSQPKAK EESPSKAGMN KRRKLNKRRR RSLPRPHDFF DAQTLDAIRH RAICFNLSAH IESLGKGHVS VFHSTVIKR KEDSGKIKLL LHWMPEDILP DVWVNESERH QLKTKVVHLS KLPKDTALLL DPNIYRTMPQ KRLKR
Characteristics:	Human AEBP2 full-length ORF (NP_694939.1, 1 a.a. - 295 a.a.) recombinant protein with GST-tag at N-terminal.
Purification:	in vitro wheat germ expression system

Target Details

Target:	AEBP2
Alternative Name:	AEBP2 (AEBP2 Products)
Background:	Full Gene Name: AE binding protein 2 Synonyms: MGC17922
Gene ID:	121536
NCBI Accession:	NM_153207

Application Details

Application Notes:	Optimal working dilution should be determined by the investigator.
Comment:	Preparation method: in vitro, wheat germ expression system Product Quality tested by: 12.5% SDS-PAGE Stained with Coomassie Blue.
Restrictions:	For Research Use only

Handling

Buffer:	50 mM Tris-HCl, 10 mM reduced Glutathione, pH =8.0 in the elution buffer.
Handling Advice:	Aliquot to avoid repeated freezing and thawing.
Storage:	-80 °C
Storage Comment:	Best use within three months from the date of receipt of this protein.

Images

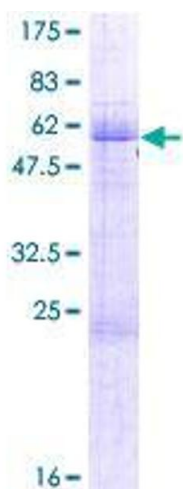


Image 1.