



[Go to Product page](#)

Datasheet for ABIN1344513

AES Protein (AA 1-264) (GST tag)

1 Image

Overview

Quantity:	10 µg
Target:	AES
Protein Characteristics:	AA 1-264
Origin:	Human
Source:	Wheat germ
Protein Type:	Recombinant
Purification tag / Conjugate:	This AES protein is labelled with GST tag.
Application:	ELISA, Western Blotting (WB), Antibody Array (AA), Affinity Purification (AP)

Product Details

Purpose:	AES (Human) Recombinant Protein (P01)
Sequence:	MCHKNGFPQE GGITAAFLQK RKLRLSKNHR PARAKVTEHV RGTRPGRATA GPAASTRAAG SLFFDRWGNR GPAGCRGSSH LPQQLKFTTS DSCDRIKDEF QLLQAQYHSL KLECDKLASE KSEMQRHYVM YYEMSYGLNI EMHKQAEIVK RLNGICAQVL PYLSQEHQQQ VLGAIERAKQ VTAPELNSII RQQLQAHQLS QLQALALPLT PLPVGLQPPS LPAVSAGTGL LLSLSALGSQA HLSKEDKNGH DGDTHQEDDG EKSD
Characteristics:	Human AES full-length ORF (NP_945320.1, 1 a.a. - 264 a.a.) recombinant protein with GST-tag at N-terminal.
Purification:	in vitro wheat germ expression system

Target Details

Target:	AES
Alternative Name:	AES (AES Products)
Background:	Full Gene Name: amino-terminal enhancer of split Synonyms: AES-1,AES-2,ESP1,GRG,GRG5,TLE5
Gene ID:	166
NCBI Accession:	NM_198969
Pathways:	WNT Signaling , SARS-CoV-2 Protein Interactome

Application Details

Application Notes:	Optimal working dilution should be determined by the investigator.
Comment:	Preparation method: in vitro, wheat germ expression system Product Quality tested by: 12.5% SDS-PAGE Stained with Coomassie Blue.
Restrictions:	For Research Use only

Handling

Buffer:	50 mM Tris-HCl, 10 mM reduced Glutathione, pH =8.0 in the elution buffer.
Handling Advice:	Aliquot to avoid repeated freezing and thawing.
Storage:	-80 °C
Storage Comment:	Best use within three months from the date of receipt of this protein.

Images

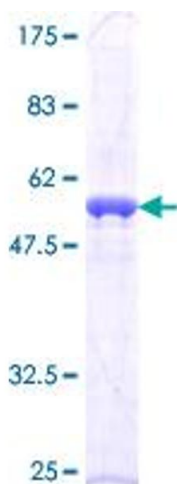


Image 1.