



[Go to Product page](#)

Datasheet for ABIN1344515  
**AES Protein (AA 2-110) (GST tag)**

1 Image

### Overview

Quantity:	10 µg
Target:	AES
Protein Characteristics:	AA 2-110
Origin:	Human
Source:	Wheat germ
Protein Type:	Recombinant
Purification tag / Conjugate:	This AES protein is labelled with GST tag.
Application:	ELISA, Western Blotting (WB), Antibody Array (AA), Affinity Purification (AP)

### Product Details

Purpose:	AES (Human) Recombinant Protein (Q01)
Sequence:	MF PQSRHSGS SHLPQQLKFT TSDSCDRIKD EFQLLQAQYH SLKLECDKLA SEKSEMQRHY VMYYEMSYGL NIEMHKQAEI VKRLNGICAQ VLPYLSQEHQ QQVLGAIER
Characteristics:	Human AES partial ORF ( NP_001121, 2 a.a. - 110 a.a.) recombinant protein with GST-tag at N-terminal.
Purification:	in vitro wheat germ expression system

### Target Details

Target:	AES
Alternative Name:	AES ( <a href="#">AES Products</a> )

## Target Details

Background:	Full Gene Name: amino-terminal enhancer of split Synonyms: AES-1,AES-2,ESP1,GRG,GRG5,TLE5
Gene ID:	166
NCBI Accession:	<a href="#">NM_001130</a>
Pathways:	<a href="#">WNT Signaling</a> , <a href="#">SARS-CoV-2 Protein Interactome</a>

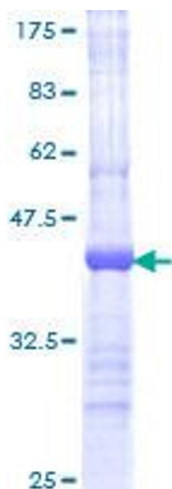
## Application Details

Application Notes:	Optimal working dilution should be determined by the investigator.
Comment:	Preparation method: in vitro, wheat germ expression system Product Quality tested by: 12.5% SDS-PAGE Stained with Coomassie Blue.
Restrictions:	For Research Use only

## Handling

Buffer:	50 mM Tris-HCl, 10 mM reduced Glutathione, pH =8.0 in the elution buffer.
Handling Advice:	Aliquot to avoid repeated freezing and thawing.
Storage:	-80 °C
Storage Comment:	Best use within three months from the date of receipt of this protein.

## Images



**Image 1.**