



[Go to Product page](#)

Datasheet for ABIN1344557

## RAGE Protein (AA 87-197) (GST tag)

### 1 Image

#### Overview

Quantity:	10 µg
Target:	RAGE (AGER)
Protein Characteristics:	AA 87-197
Origin:	Human
Source:	Wheat germ
Protein Type:	Recombinant
Purification tag / Conjugate:	This RAGE protein is labelled with GST tag.
Application:	Western Blotting (WB), ELISA, Affinity Purification (AP), Antibody Array (AA)

#### Product Details

Purpose:	AGER (Human) Recombinant Protein (Q01)
Sequence:	PAVGIQDEGI FRCQAMNRNG KETKSNYRVR VYQIPGKPEI VDSASELTAG VPNKVGT CVS EGSY PAGTLS WHLDGKPLVP NEKGVSVKEQ TRRHPETGLF TLQSELMVTP A
Characteristics:	Human AGER partial ORF ( AAH20669.1, 87 a.a. - 197 a.a.) recombinant protein with GST-tag at N-terminal.
Purification:	in vitro wheat germ expression system

#### Target Details

Target:	RAGE (AGER)
Alternative Name:	AGER ( <a href="#">AGER Products</a> )

## Target Details

Background:	Full Gene Name: advanced glycosylation end product-specific receptor Synonyms: MGC22357,RAGE
Gene ID:	177
Pathways:	<a href="#">Carbohydrate Homeostasis</a> , <a href="#">Toll-Like Receptors Cascades</a> , <a href="#">Smooth Muscle Cell Migration</a> , <a href="#">S100 Proteins</a>

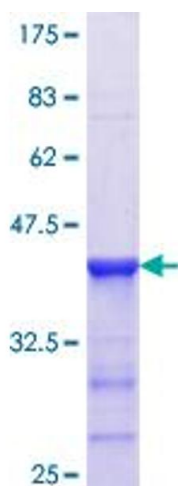
## Application Details

Application Notes:	Optimal working dilution should be determined by the investigator.
Comment:	Preparation method: in vitro, wheat germ expression system Product Quality tested by: 12.5% SDS-PAGE Stained with Coomassie Blue.
Restrictions:	For Research Use only

## Handling

Buffer:	50 mM Tris-HCl, 10 mM reduced Glutathione, pH =8.0 in the elution buffer.
Handling Advice:	Aliquot to avoid repeated freezing and thawing.
Storage:	-80 °C
Storage Comment:	Best use within three months from the date of receipt of this protein.

## Images



**Image 1.**