



[Go to Product page](#)

Datasheet for ABIN1344620

AGXT2L2 Protein (AA 1-175) (GST tag)

1 Image

Overview

Quantity:	10 µg
Target:	AGXT2L2
Protein Characteristics:	AA 1-175
Origin:	Human
Source:	Wheat germ
Protein Type:	Recombinant
Purification tag / Conjugate:	This AGXT2L2 protein is labelled with GST tag.
Application:	ELISA, Western Blotting (WB), Antibody Array (AA), Affinity Purification (AP)

Product Details

Purpose:	MGC15875 (Human) Recombinant Protein (P02)
Sequence:	MGKSI ¹ GN ² GH ³ P ⁴ VACVAATQPV ARAFEATGVE YFN ⁵ TFGGSPV SCAVGLAVLN VLEKEQLQDH ATSVGSFLMQ LLGQQKIKHP IVGDV ⁶ RGVGL FIGVDLIKDE ATRTPATEEA AYLVSRLKEN YVLLSTDGPG RNILKFKPPM CFSLDNARQV VAKLDAILD MEEKVRSCET LRLQP
Characteristics:	Human MGC15875 full-length ORF (ENSP00000321290, 1 a.a. - 175 a.a.) recombinant protein with GST-tag at N-terminal.
Purification:	in vitro wheat germ expression system

Target Details

Target:	AGXT2L2
Alternative Name:	AGXT2L2 (AGXT2L2 Products)

Target Details

Background:	Full Gene Name: alanine-glyoxylate aminotransferase 2-like 2 Synonyms: MGC117348,MGC15875,MGC45484
Gene ID:	85007

Application Details

Application Notes:	Optimal working dilution should be determined by the investigator.
Comment:	Preparation method: in vitro, wheat germ expression system Product Quality tested by: 12.5% SDS-PAGE Stained with Coomassie Blue.
Restrictions:	For Research Use only

Handling

Buffer:	50 mM Tris-HCl, 10 mM reduced Glutathione, pH =8.0 in the elution buffer.
Handling Advice:	Aliquot to avoid repeated freezing and thawing.
Storage:	-80 °C
Storage Comment:	Best use within three months from the date of receipt of this protein.

Images

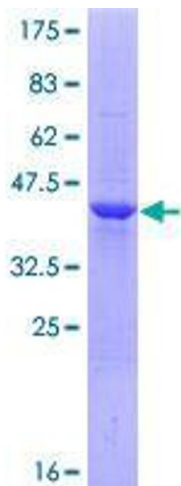


Image 1.