



[Go to Product page](#)

Datasheet for ABIN1344630

AHDC1 Protein (AA 1-399) (GST tag)

1 Image

Overview

Quantity:	10 µg
Target:	AHDC1
Protein Characteristics:	AA 1-399
Origin:	Human
Source:	Wheat germ
Protein Type:	Recombinant
Purification tag / Conjugate:	This AHDC1 protein is labelled with GST tag.
Application:	ELISA, Western Blotting (WB), Antibody Array (AA), Affinity Purification (AP)

Product Details

Purpose:	AHDC1 (Human) Recombinant Protein (P01)
Sequence:	MMDWNEASSA PGINWNQSVL FQSSSKPGRG RRKKVDLFEA SHLGFPTSAS AAASGYPSKR STGPRQPRGG RGGGACSAKK ERGGAAAKAK FIPKPQPVNP LFQDSPDLGL DYYSGDSSMS PLPSQSRAFG VGERDPCDFI GPYSMNPSTP SDGTFGQGFH CDSPLGAPE LDGKHFPPLA HPPTVFDAGL QKAYSPTCSP TLGFKEELRP PPTKLAACEP LKHGLQGASL GHAAAAQAHL SCRDLPLGQP HYDSPSCKGT AYWYPPGSAA RSPPYEGKVG TGLLADFLGR TEAACLSPH LASPPATPKA DKEPLEMARP PGPPRGPAAA AAGYGCPPLS DLTLSVPRD SLLPLQDTAY RYPGFMPQAH PGLGGGPKSG FLGPMAEPHP EDTFTVTSL
Characteristics:	Human AHDC1 full-length ORF (AAH14394.2, 1 a.a. - 399 a.a.) recombinant protein with GST-tag at N-terminal.
Purification:	in vitro wheat germ expression system

Target Details

Target:	AHDC1
Alternative Name:	AHDC1 (AHDC1 Products)
Background:	Full Gene Name: AT hook, DNA binding motif, containing 1 Synonyms: CL23945,DJ159A19.3,RP1-159A19.1
Gene ID:	27245

Application Details

Application Notes:	Optimal working dilution should be determined by the investigator.
Comment:	Preparation method: in vitro, wheat germ expression system Product Quality tested by: 12.5% SDS-PAGE Stained with Coomassie Blue.
Restrictions:	For Research Use only

Handling

Buffer:	50 mM Tris-HCl, 10 mM reduced Glutathione, pH =8.0 in the elution buffer.
Handling Advice:	Aliquot to avoid repeated freezing and thawing.
Storage:	-80 °C
Storage Comment:	Best use within three months from the date of receipt of this protein.

Images

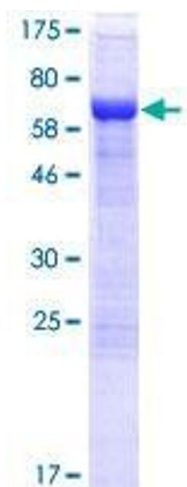


Image 1.