

Datasheet for ABIN1344712
AKAP12 Protein (AA 1675-1782) (GST tag)



[Go to Product page](#)

1 Image

Overview

Quantity:	10 µg
Target:	AKAP12
Protein Characteristics:	AA 1675-1782
Origin:	Human
Source:	Wheat germ
Protein Type:	Recombinant
Purification tag / Conjugate:	This AKAP12 protein is labelled with GST tag.
Application:	Western Blotting (WB), Antibody Array (AA), Affinity Purification (AP), ELISA

Product Details

Purpose:	AKAP12 (Human) Recombinant Protein (Q01)
Sequence:	VPEDDGHALL AERIEKSLVE PKEDEKGDDV DDPENQNSAL ADTDASGGLT KESPD TNGPK QKEKEDAQEV ELQEGKVHSE SDKAITPQAQ EELQKQERES AKSELTES
Characteristics:	Human AKAP12 partial ORF (NP_005091, 1675 a.a. - 1782 a.a.) recombinant protein with GST-tag at N-terminal.
Purification:	in vitro wheat germ expression system

Target Details

Target:	AKAP12
Alternative Name:	AKAP12 (AKAP12 Products)

Target Details

Background:	Full Gene Name: A kinase (PRKA) anchor protein 12 Synonyms: AKAP250,DKFZp686M0430,DKFZp686O0331,FLJ20945,FLJ97621
Gene ID:	9590
NCBI Accession:	NM_005100
Pathways:	cAMP Metabolic Process

Application Details

Application Notes:	Optimal working dilution should be determined by the investigator.
Comment:	Preparation method: in vitro, wheat germ expression system Product Quality tested by: 12.5% SDS-PAGE Stained with Coomassie Blue.
Restrictions:	For Research Use only

Handling

Buffer:	50 mM Tris-HCl, 10 mM reduced Glutathione, pH =8.0 in the elution buffer.
Handling Advice:	Aliquot to avoid repeated freezing and thawing.
Storage:	-80 °C
Storage Comment:	Best use within three months from the date of receipt of this protein.

Images

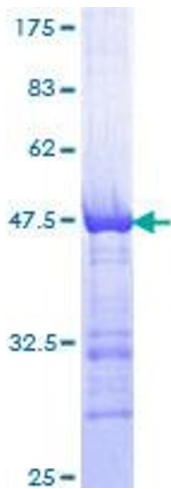


Image 1.