



[Go to Product page](#)

Datasheet for ABIN1344715

## AKAP13 Protein (AA 1-110) (GST tag)

### 1 Image

#### Overview

Quantity:	10 µg
Target:	AKAP13
Protein Characteristics:	AA 1-110
Origin:	Human
Source:	Wheat germ
Protein Type:	Recombinant
Purification tag / Conjugate:	This AKAP13 protein is labelled with GST tag.
Application:	ELISA, Western Blotting (WB), Antibody Array (AA), Affinity Purification (AP)

#### Product Details

Purpose:	AKAP13 (Human) Recombinant Protein (Q01)
Sequence:	MKLNPPQAPL YGDCVVTVLL AEEDKAEDDV VFYLVFLGST LRHCTSTRKV SSDTLETIAP GHDCCEVTKV QLCASKEGLP VFVVAEEDFH FVQDEAYDAA QFLATSAGNQ
Characteristics:	Human AKAP13 partial ORF ( NP_006729, 1 a.a. - 110 a.a.) recombinant protein with GST-tag at N-terminal.
Purification:	in vitro wheat germ expression system

#### Target Details

Target:	AKAP13
Alternative Name:	AKAP13 ( <a href="#">AKAP13 Products</a> )

## Target Details

Background:	Full Gene Name: A kinase (PRKA) anchor protein 13 Synonyms: AKAP-Lbc, ARHGEF13, BRX, FLJ11952, FLJ43341, HA-3, Ht31, LBC, PROTO-LB, PROTO-LBC, c-lbc
Gene ID:	11214
NCBI Accession:	<a href="#">NM_006738</a>
Pathways:	<a href="#">Neurotrophin Signaling Pathway</a>

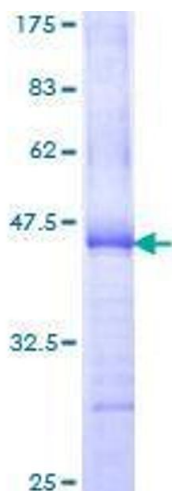
## Application Details

Application Notes:	Optimal working dilution should be determined by the investigator.
Comment:	Preparation method: in vitro, wheat germ expression system Product Quality tested by: 12.5% SDS-PAGE Stained with Coomassie Blue.
Restrictions:	For Research Use only

## Handling

Buffer:	50 mM Tris-HCl, 10 mM reduced Glutathione, pH =8.0 in the elution buffer.
Handling Advice:	Aliquot to avoid repeated freezing and thawing.
Storage:	-80 °C
Storage Comment:	Best use within three months from the date of receipt of this protein.

## Images



**Image 1.**