



[Go to Product page](#)

Datasheet for ABIN1344764

AKR1CL1 Protein (AA 1-129) (GST tag)

1 Image

Overview

Quantity:	10 µg
Target:	AKR1CL1
Protein Characteristics:	AA 1-129
Origin:	Human
Source:	Wheat germ
Protein Type:	Recombinant
Purification tag / Conjugate:	This AKR1CL1 protein is labelled with GST tag.
Application:	Antibody Array (AA), Affinity Purification (AP), ELISA, Western Blotting (WB)

Product Details

Purpose:	AKR1CL1 (Human) Recombinant Protein (P01)
Sequence:	MMTDLKQSHS VRLNDGPFMP VLGFGTYAPD HTPKSQAEEA TKVAIDVGFR HIDSAYLYQN EEEVQGAIWE KIADGTVKRE EIFYTIKLWA TFFRAELVHP ALERSLKKLG PDYVDLFIH VPFAMKGSS
Characteristics:	Human AKR1CL1 full-length ORF (NP_001007537.1, 1 a.a. - 129 a.a.) recombinant protein with GST-tag at N-terminal.
Purification:	in vitro wheat germ expression system

Target Details

Target:	AKR1CL1
Alternative Name:	AKR1CL1 (AKR1CL1 Products)

Target Details

Background:	Full Gene Name: aldo-keto reductase family 1, member C-like 1 Synonyms: FLJ16347
Gene ID:	340811
NCBI Accession:	NM_001007536

Application Details

Application Notes:	Optimal working dilution should be determined by the investigator.
Comment:	Preparation method: in vitro, wheat germ expression system Product Quality tested by: 12.5% SDS-PAGE Stained with Coomassie Blue.
Restrictions:	For Research Use only

Handling

Buffer:	50 mM Tris-HCl, 10 mM reduced Glutathione, pH =8.0 in the elution buffer.
Handling Advice:	Aliquot to avoid repeated freezing and thawing.
Storage:	-80 °C
Storage Comment:	Best use within three months from the date of receipt of this protein.

Images

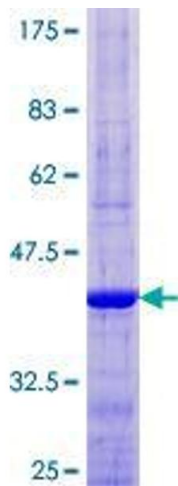


Image 1.