

Datasheet for ABIN1344801

Albumin Protein (ALB) (AA 19-609) (GST tag)



[Go to Product page](#)

1 Image

Overview

Quantity:	10 µg
Target:	Albumin (ALB)
Protein Characteristics:	AA 19-609
Origin:	Human
Source:	Wheat germ
Protein Type:	Recombinant
Purification tag / Conjugate:	This Albumin protein is labelled with GST tag.
Application:	Western Blotting (WB), ELISA, Antibody Array (AA), Affinity Purification (AP)

Product Details

Purpose:	ALB (Human) Recombinant Protein (P01)
Sequence:	RGVFRRDAHK SEVAHRFKDL GEENFKALVL IAFAQYLQQC PFEDHVKLVN EVTEFAKTCV ADESAENCDK SLHTLFGDKL CTVATLRETY GEMADCCAQK EPERNECFLQ HKDDNPNLPR LVRPEVDVMC TAFHDNEETF LKKYLYEIAR RHPYFYAPEL LFFAKRYKAA FTECCQAADK AACLLPKLDE LRDEGKASSA KQRLKCASLQ KGERAFKAW AVARLSQRFP KAFAEVSKL VTDLTKVHTE CCHGDLLECA DDRADLAKYI CENQDSISSK LKECCEKPLL EKSHCIAEVE NDEMPADLPS LAADFVESKD VCKNYAEAKD VFLGMFLY EYARRHPDYSVV LLLRLAKTYE TTLEKCCAAA DPHECYAKVF DEFKPLVEEP QNLIKQNC EL FEQLGEYKFQ NALLVRYTKK VPQVSTPTLV EVSRNLGKVG SKCCKHPEAK RMPCAEDYLS VVLNQLCVLH EKTPVSDRVT KCCTESLVNR RPCFSALEVD ETYVPKEFNA ETFTFHADIC TLSEKERQIK KQTALVELVK HKPKATKEQL KAVMDDFAAF VEKCKADDK ETCFAEGGKK LVAASQAALG L
Characteristics:	Human ALB full-length ORF (AAH34023, 19 a.a. - 609 a.a.) recombinant protein with GST-tag at

Product Details

N-terminal.

Purification: in vitro wheat germ expression system

Target Details

Target: Albumin (ALB)

Alternative Name: ALB ([ALB Products](#))

Background: Full Gene Name: albumin
Synonyms: DKFZp779N1935,PRO0883,PRO0903,PRO1341

Gene ID: 213

Pathways: [Lipid Metabolism](#)

Application Details

Application Notes: Optimal working dilution should be determined by the investigator.

Comment: Preparation method: in vitro, wheat germ expression system
Product Quality tested by: 12.5% SDS-PAGE Stained with Coomassie Blue.

Restrictions: For Research Use only

Handling

Buffer: 50 mM Tris-HCl, 10 mM reduced Glutathione, pH =8.0 in the elution buffer.

Handling Advice: Aliquot to avoid repeated freezing and thawing.

Storage: -80 °C

Storage Comment: Best use within three months from the date of receipt of this protein.

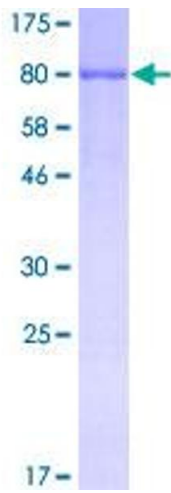


Image 1.