



[Go to Product page](#)

Datasheet for ABIN1344806

CD166 Protein (AA 28-137) (GST tag)

1 Image

Overview

Quantity:	10 µg
Target:	CD166 (ALCAM)
Protein Characteristics:	AA 28-137
Origin:	Human
Source:	Wheat germ
Protein Type:	Recombinant
Purification tag / Conjugate:	This CD166 protein is labelled with GST tag.
Application:	Western Blotting (WB), ELISA, Affinity Purification (AP), Antibody Array (AA)

Product Details

Purpose:	ALCAM (Human) Recombinant Protein (Q01)
Sequence:	WYTVNSAYGD TIIIPCRLDV PQNLMFGKWK YEKPDGSPVF IAFRSSTKKS VQYDDVPEYK DRLNLSENYT LSISNARISD EKRFVCMMLVT EDNVFEAPTI VKVFKQPSKP
Characteristics:	Human ALCAM partial ORF (NP_001618, 28 a.a. - 137 a.a.) recombinant protein with GST-tag at N-terminal.
Purification:	in vitro wheat germ expression system

Target Details

Target:	CD166 (ALCAM)
Alternative Name:	ALCAM (ALCAM Products)

Target Details

Background:	Full Gene Name: activated leukocyte cell adhesion molecule Synonyms: CD166,FLJ38514,MEMD,MGC71733
Gene ID:	214
NCBI Accession:	NM_001627

Application Details

Application Notes:	Optimal working dilution should be determined by the investigator.
Comment:	Preparation method: in vitro, wheat germ expression system Product Quality tested by: 12.5% SDS-PAGE Stained with Coomassie Blue.
Restrictions:	For Research Use only

Handling

Buffer:	50 mM Tris-HCl, 10 mM reduced Glutathione, pH =8.0 in the elution buffer.
Handling Advice:	Aliquot to avoid repeated freezing and thawing.
Storage:	-80 °C
Storage Comment:	Best use within three months from the date of receipt of this protein.

Images

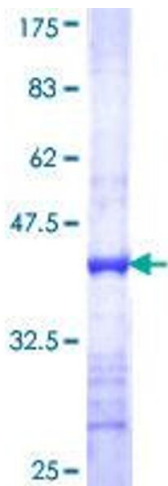


Image 1.