

Datasheet for ABIN1344834

ALDH3B1 Protein (AA 1-468) (GST tag)



[Go to Product page](#)

1 Image

Overview

Quantity:	10 µg
Target:	ALDH3B1
Protein Characteristics:	AA 1-468
Origin:	Human
Source:	Wheat germ
Protein Type:	Recombinant
Purification tag / Conjugate:	This ALDH3B1 protein is labelled with GST tag.
Application:	Western Blotting (WB), ELISA, Antibody Array (AA), Affinity Purification (AP)

Product Details

Purpose:	ALDH3B1 (Human) Recombinant Protein (P01)
Sequence:	MDPLGDTLRR LREAFHAGRT RPAEFRAAQL QGLGRFLQEN KQLLHDALAQ DLHKSAFESE VSEVAISQGE VTLALRNLRA WMKDERVPKN LATQLDSAFI RKEPFGLVLI IAPWNYPLNL TLVPLVGALA AGNCVVLKPS EISKNVKIL AEVLPQYVDQ SCFAVVLGGP QETGQLLLEHR FDYIFFTGSP RVGKIVMTAA AKHLTPVTLE LGGKNPCYVD DNCDPQTVAN RVAWFRYFNA GQTCVAPDYV LCSPQMQLR LPALQSTITR FYGDDPQSSP NLGRIINQKQ FQRLRALLGC GRVAIGGQSD ESDRYIAPTV LVDVQEMEPV MQEEIFGPIL PIVNVQSLDE AIEFINRREK PLALYAFSNS SQVVKRVLQ TSSGGFCGND GFMHMTLASL PFGGVGASGM GRYHGKFSFD TFSHHRACLL RSPGMEKLN LRYPPQSPRR LRMLLVAMEA QGCSCTLL
Characteristics:	Human ALDH3B1 full-length ORF (AAH13584, 1 a.a. - 468 a.a.) recombinant protein with GST-tag at N-terminal.

Product Details

Purification: in vitro wheat germ expression system

Target Details

Target: ALDH3B1

Alternative Name: ALDH3B1 ([ALDH3B1 Products](#))

Background: Full Gene Name: aldehyde dehydrogenase 3 family, member B1
Synonyms: ALDH4,ALDH7,FLJ26433

Gene ID: 221

Pathways: [Monocarboxylic Acid Catabolic Process](#)

Application Details

Application Notes: Optimal working dilution should be determined by the investigator.

Comment: Preparation method: in vitro, wheat germ expression system
Product Quality tested by: 12.5% SDS-PAGE Stained with Coomassie Blue.

Restrictions: For Research Use only

Handling

Buffer: 50 mM Tris-HCl, 10 mM reduced Glutathione, pH =8.0 in the elution buffer.

Handling Advice: Aliquot to avoid repeated freezing and thawing.

Storage: -80 °C

Storage Comment: Best use within three months from the date of receipt of this protein.

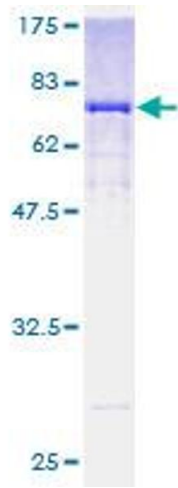


Image 1.