



[Go to Product page](#)

Datasheet for ABIN1344843

ALDH7A1 Protein (AA 1-511) (GST tag)

1 Image

Overview

Quantity:	10 µg
Target:	ALDH7A1
Protein Characteristics:	AA 1-511
Origin:	Human
Source:	Wheat germ
Protein Type:	Recombinant
Purification tag / Conjugate:	This ALDH7A1 protein is labelled with GST tag.
Application:	Western Blotting (WB), ELISA, Antibody Array (AA), Affinity Purification (AP)

Product Details

Purpose:	ALDH7A1 (Human) Recombinant Protein (P01)
Sequence:	MSTLLINQPQ YAWLKELGLR EENEGVYNGS WGGRGEVITT YCPANNEPIA RVRQASVADY EETVKKAREA WKIWADIPAP KRGEIVRQIG DALREKIQVL GSLVSLEMVK ILVEGVGEVQ EYVDICDYAV GLSRMIGGPI LPSERSGHAL IEQWNPVGLV GIITAFNFPV AVYGWNNIAIA MICGNVCLWK GAPTTSLISV AVTKIIAKVL EDNKLPGAIC SLTCGGADIG TAMAKDERVN LLSFTGSTQV GKQVGLMVQE RFGRSLEELG GNNIIAFED ADLSLVVPSA LFAAVGTAGQ RCTTARRLFI HESIHDEVVN RLKKAYAQIR VGNPWDPNVL YGPLHTKQAV SMFLGAVEEA KKEGGTVVYG GKVMDRPGNY VEPTIVTGLG HDASIAHTET FAPILYVFKF KNEEEVFAWN NEVKQGLSSS IFTKDLGRIF RWLGPKGSDC GIVNVNIPTS GAEIGGAFGG EKHTGGGRES GSDAWKQYMR RSTCTINYSK DLPLAQGIKF Q
Characteristics:	Human ALDH7A1 full-length ORF (NP_001173.1, 1 a.a. - 511 a.a.) recombinant protein with GST-tag at N-terminal.

Product Details

Purification: in vitro wheat germ expression system

Target Details

Target: ALDH7A1

Alternative Name: ALDH7A1 ([ALDH7A1 Products](#))

Background: Full Gene Name: aldehyde dehydrogenase 7 family, member A1
Synonyms: ATQ1,EPD,FLJ11738,FLJ92814,PDE

Gene ID: 501

NCBI Accession: [NM_001182](#)

Pathways: [Sensory Perception of Sound](#)

Application Details

Application Notes: Optimal working dilution should be determined by the investigator.

Comment: Preparation method: in vitro, wheat germ expression system
Product Quality tested by: 12.5% SDS-PAGE Stained with Coomassie Blue.

Restrictions: For Research Use only

Handling

Buffer: 50 mM Tris-HCl, 10 mM reduced Glutathione, pH =8.0 in the elution buffer.

Handling Advice: Aliquot to avoid repeated freezing and thawing.

Storage: -80 °C

Storage Comment: Best use within three months from the date of receipt of this protein.

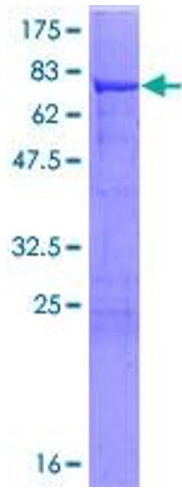


Image 1.