

Datasheet for ABIN1344855
ALDOA Protein (AA 21-95) (GST tag)



[Go to Product page](#)

1 Image

Overview

Quantity:	10 µg
Target:	ALDOA
Protein Characteristics:	AA 21-95
Origin:	Human
Source:	Wheat germ
Protein Type:	Recombinant
Purification tag / Conjugate:	This ALDOA protein is labelled with GST tag.
Application:	Western Blotting (WB), ELISA, Antibody Array (AA), Affinity Purification (AP)

Product Details

Purpose:	ALDOA (Human) Recombinant Protein (Q01)
Sequence:	HRIVAPGKGI LAADESTGSI AKRLQSIGTE NTEENRRFYR QLLLTADDRV NPCIGGVILF HETLYQKADD GRPFP
Characteristics:	Human ALDOA partial ORF (AAH10660.1, 21 a.a. - 95 a.a.) recombinant protein with GST-tag at N-terminal.
Purification:	in vitro wheat germ expression system

Target Details

Target:	ALDOA
Alternative Name:	ALDOA (ALDOA Products)

Target Details

Background:	Full Gene Name: aldolase A, fructose-bisphosphate Synonyms: ALDA,MGC10942,MGC17716,MGC17767
Gene ID:	226
Pathways:	Ribonucleoside Biosynthetic Process

Application Details

Application Notes:	Optimal working dilution should be determined by the investigator.
Comment:	Preparation method: in vitro, wheat germ expression system Product Quality tested by: 12.5% SDS-PAGE Stained with Coomassie Blue.
Restrictions:	For Research Use only

Handling

Buffer:	50 mM Tris-HCl, 10 mM reduced Glutathione, pH =8.0 in the elution buffer.
Handling Advice:	Aliquot to avoid repeated freezing and thawing.
Storage:	-80 °C
Storage Comment:	Best use within three months from the date of receipt of this protein.

Images

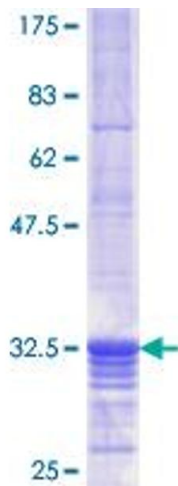


Image 1.