

Datasheet for ABIN1344865

**ALG1 Protein (AA 154-253) (GST tag)**[Go to Product page](#)**1** Image

## Overview

Quantity:	10 µg
Target:	ALG1
Protein Characteristics:	AA 154-253
Origin:	Human
Source:	Wheat germ
Protein Type:	Recombinant
Purification tag / Conjugate:	This ALG1 protein is labelled with GST tag.
Application:	ELISA, Western Blotting (WB), Antibody Array (AA), Affinity Purification (AP)

## Product Details

Purpose:	ALG1 (Human) Recombinant Protein (Q01)
Sequence:	IDWHNYGYSI MGLVHGP NHP LVLLAKWYEK FFGRLSHLNL CVTNAMREDL ADNWHIRAVT VYDKPASFFK ETPLDLQHRL FMKLGSMHSP FRARSEPEDP
Characteristics:	Human ALG1 partial ORF ( NP_061982, 154 a.a. - 253 a.a.) recombinant protein with GST-tag at N-terminal.
Purification:	in vitro wheat germ expression system

## Target Details

Target:	ALG1
Alternative Name:	ALG1 ( <a href="#">ALG1 Products</a> )

## Target Details

---

Background:	Full Gene Name: asparagine-linked glycosylation 1, beta-1,4-mannosyltransferase homolog ( <i>S. cerevisiae</i> ) Synonyms: HMAT1,HMT-1,HMT1
Gene ID:	56052
NCBI Accession:	<a href="#">NM_019109</a>

## Application Details

---

Application Notes:	Optimal working dilution should be determined by the investigator.
Comment:	Preparation method: in vitro, wheat germ expression system Product Quality tested by: 12.5% SDS-PAGE Stained with Coomassie Blue.
Restrictions:	For Research Use only

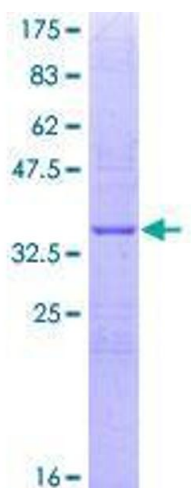
## Handling

---

Buffer:	50 mM Tris-HCl, 10 mM reduced Glutathione, pH =8.0 in the elution buffer.
Handling Advice:	Aliquot to avoid repeated freezing and thawing.
Storage:	-80 °C
Storage Comment:	Best use within three months from the date of receipt of this protein.

## Images

---



**Image 1.**