



Datasheet for ABIN1344879

ALG5 Protein (AA 1-324) (GST tag)



[Go to Product page](#)

1 Image

Overview

Quantity:	25 µg
Target:	ALG5
Protein Characteristics:	AA 1-324
Origin:	Human
Source:	Wheat germ
Protein Type:	Recombinant
Purification tag / Conjugate:	This ALG5 protein is labelled with GST tag.
Application:	ELISA, Western Blotting (WB), Antibody Array (AA), Affinity Purification (AP)

Product Details

Purpose:	ALG5 (Human) Recombinant Protein (P01)
Sequence:	MAPLLLQLAV LGAALAAAAL VLISIVAFTT ATKMPALHRH EEEKFFLNAK GQKETLPSIW DSPTKQLSVV VPSYNEEKRL PVMMDEALSY LEKRQKRDPA FTYEVIVVDD GSKDQTSKVA FKYCQKYGSD KVRVITLVKN RGKGGAIRMG IFSSRGEKIL MADADGATKF PDVEKLEKGL NDLQPWPNQM AIACGSRAHL EKESIAQRSY FRTLLMYGFH FLVWFLCVKG IRDTQCGFKL FTREAASRTF SSLHVERWAF DVELLYIAQF FKIPAEIAV NWTEIEGSKL VPFWSWLQMG KDLLFIRLRY LTGAWRLEQT RKMN
Characteristics:	Human ALG5 full-length ORF (AAH12531, 1 a.a. - 324 a.a.) recombinant protein with GST-tag at N-terminal.
Purification:	in vitro wheat germ expression system

Target Details

Target:	ALG5
Alternative Name:	ALG5 (ALG5 Products)
Background:	Full Gene Name: asparagine-linked glycosylation 5, dolichyl-phosphate beta-glucosyltransferase homolog (<i>S. cerevisiae</i>) Synonyms: RP11-421P11.2,bA421P11.2
Gene ID:	29880
Pathways:	SARS-CoV-2 Protein Interactome

Application Details

Application Notes:	Optimal working dilution should be determined by the investigator.
Comment:	Preparation method: in vitro, wheat germ expression system Product Quality tested by: 12.5% SDS-PAGE Stained with Coomassie Blue.
Restrictions:	For Research Use only

Handling

Buffer:	50 mM Tris-HCl, 10 mM reduced Glutathione, pH =8.0 in the elution buffer.
Handling Advice:	Aliquot to avoid repeated freezing and thawing.
Storage:	-80 °C
Storage Comment:	Best use within three months from the date of receipt of this protein.

Images

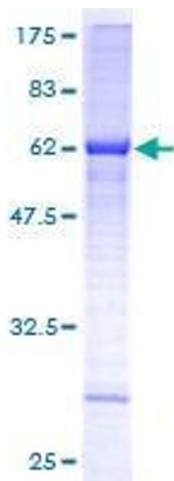


Image 1.