

Datasheet for ABIN1344880  
**ALG5 Protein (AA 232-324) (GST tag)**



[Go to Product page](#)

1 Image

Overview

Quantity:	10 µg
Target:	ALG5
Protein Characteristics:	AA 232-324
Origin:	Human
Source:	Wheat germ
Protein Type:	Recombinant
Purification tag / Conjugate:	This ALG5 protein is labelled with GST tag.
Application:	ELISA, Western Blotting (WB), Antibody Array (AA), Affinity Purification (AP)

Product Details

Purpose:	ALG5 (Human) Recombinant Protein (Q01)
Sequence:	RDTQCGFKLF TREASRTFS SLHVERWAFD VELLVIAQFF KIPIAEIAVN WTEIEGSKLV PFWSWLQMGK DLLFIRLRYL TGAWRLEQTR KMN
Characteristics:	Human ALG5 partial ORF ( NP_037470, 232 a.a. - 324 a.a.) recombinant protein with GST-tag at N-terminal.
Purification:	in vitro wheat germ expression system

Target Details

Target:	ALG5
Alternative Name:	ALG5 ( <a href="#">ALG5 Products</a> )

## Target Details

Background:	Full Gene Name: asparagine-linked glycosylation 5, dolichyl-phosphate beta-glucosyltransferase homolog ( <i>S. cerevisiae</i> ) Synonyms: RP11-421P11.2,bA421P11.2
Gene ID:	29880
NCBI Accession:	<a href="#">NM_013338</a>
Pathways:	<a href="#">SARS-CoV-2 Protein Interactome</a>

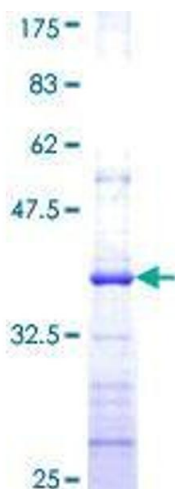
## Application Details

Application Notes:	Optimal working dilution should be determined by the investigator.
Comment:	Preparation method: in vitro, wheat germ expression system Product Quality tested by: 12.5% SDS-PAGE Stained with Coomassie Blue.
Restrictions:	For Research Use only

## Handling

Buffer:	50 mM Tris-HCl, 10 mM reduced Glutathione, pH =8.0 in the elution buffer.
Handling Advice:	Aliquot to avoid repeated freezing and thawing.
Storage:	-80 °C
Storage Comment:	Best use within three months from the date of receipt of this protein.

## Images



**Image 1.**