

Datasheet for ABIN1344884

ALG8 Protein (AA 260-334) (GST tag)



[Go to Product page](#)

1 Image

Overview

Quantity:	10 µg
Target:	ALG8
Protein Characteristics:	AA 260-334
Origin:	Human
Source:	Wheat germ
Protein Type:	Recombinant
Purification tag / Conjugate:	This ALG8 protein is labelled with GST tag.
Application:	ELISA, Western Blotting (WB), Antibody Array (AA), Affinity Purification (AP)

Product Details

Purpose:	ALG8 (Human) Recombinant Protein (Q01)
Sequence:	NQLPQVFSRL FPFKRG LCHA YWAPNFWALY NALDKVLSVI GLKLFDPN NIPKASMTSG LVQQFQHTVL PSVTP
Characteristics:	Human ALG8 partial ORF (NP_076984, 260 a.a. - 334 a.a.) recombinant protein with GST-tag at N-terminal.
Purification:	in vitro wheat germ expression system

Target Details

Target:	ALG8
Alternative Name:	ALG8 (ALG8 Products)

Target Details

Background:	Full Gene Name: asparagine-linked glycosylation 8, alpha-1,3-glucosyltransferase homolog (S. cerevisiae) Synonyms: MGC2840
Gene ID:	79053
NCBI Accession:	NM_024079
Pathways:	SARS-CoV-2 Protein Interactome

Application Details

Application Notes:	Optimal working dilution should be determined by the investigator.
Comment:	Preparation method: in vitro, wheat germ expression system Product Quality tested by: 12.5% SDS-PAGE Stained with Coomassie Blue.
Restrictions:	For Research Use only

Handling

Buffer:	50 mM Tris-HCl, 10 mM reduced Glutathione, pH =8.0 in the elution buffer.
Handling Advice:	Aliquot to avoid repeated freezing and thawing.
Storage:	-80 °C
Storage Comment:	Best use within three months from the date of receipt of this protein.

Images

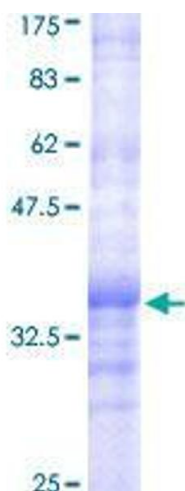


Image 1.