



[Go to Product page](#)

Datasheet for ABIN1344911

ALOX12B Protein (AA 171-261) (GST tag)

1 Image

Overview

Quantity:	10 µg
Target:	ALOX12B
Protein Characteristics:	AA 171-261
Origin:	Human
Source:	Wheat germ
Protein Type:	Recombinant
Purification tag / Conjugate:	This ALOX12B protein is labelled with GST tag.
Application:	Western Blotting (WB), ELISA, Antibody Array (AA), Affinity Purification (AP)

Product Details

Purpose:	ALOX12B (Human) Recombinant Protein (Q01)
Sequence:	NPNRPEWNGY IPGFPILINF KATKFLNLNL RYSFLKTASF FVRLGPMALA FKVRGLLDCK HSWKRLKDIR KIFPGKKSVM SEYVAEHWAE D
Characteristics:	Human ALOX12B partial ORF (NP_001130, 171 a.a. - 261 a.a.) recombinant protein with GST-tag at N-terminal.
Purification:	in vitro wheat germ expression system

Target Details

Target:	ALOX12B
Alternative Name:	ALOX12B (ALOX12B Products)

Target Details

Background: Gene: arachidonate 12-lipoxygenase, 12R type
Synonyms: 12R-LOX

Gene ID: 242

NCBI Accession: [NM_001139](#)

Pathways: [Cell-Cell Junction Organization](#)

Application Details

Application Notes: Optimal working dilution should be determined by the investigator.

Restrictions: For Research Use only

Handling

Buffer: 50 mM Tris-HCl, 10 mM reduced Glutathione, pH =8.0 in the elution buffer.

Handling Advice: Aliquot to avoid repeated freezing and thawing.

Storage: -80 °C

Storage Comment: Best use within three months from the date of receipt of this protein.

Images

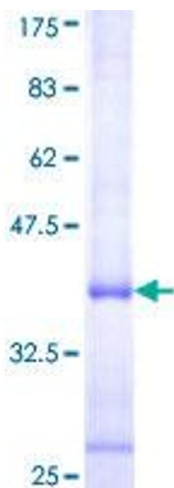


Image 1.