



[Go to Product page](#)

Datasheet for ABIN1344919

ALOX15B Protein (AA 181-280) (GST tag)

1 Image

Overview

Quantity:	10 µg
Target:	ALOX15B
Protein Characteristics:	AA 181-280
Origin:	Human
Source:	Wheat germ
Protein Type:	Recombinant
Purification tag / Conjugate:	This ALOX15B protein is labelled with GST tag.
Application:	Western Blotting (WB), ELISA, Antibody Array (AA), Affinity Purification (AP)

Product Details

Purpose:	ALOX15B (Human) Recombinant Protein (Q01)
Sequence:	NANFYLQAGS AFAEMKIKGL LDRKGLWRSL NEMKRIFNFR RTPAAEHAFE HWQEDAFFAS QFLNGLNPVL IRRCHYLPKN FVPTDAMVAS VLGPGTSLQA
Characteristics:	Human ALOX15B partial ORF (AAH35217.1, 181 a.a. - 280 a.a.) recombinant protein with GST-tag at N-terminal.
Purification:	in vitro wheat germ expression system

Target Details

Target:	ALOX15B
Alternative Name:	ALOX15B (ALOX15B Products)

Target Details

Background: Full Gene Name: arachidonate 15-lipoxygenase, type B
Synonyms: 15-LOX-2

Gene ID: 247

Application Details

Application Notes: Optimal working dilution should be determined by the investigator.

Comment: Preparation method: in vitro, wheat germ expression system
Product Quality tested by: 12.5% SDS-PAGE Stained with Coomassie Blue.

Restrictions: For Research Use only

Handling

Buffer: 50 mM Tris-HCl, 10 mM reduced Glutathione, pH =8.0 in the elution buffer.

Handling Advice: Aliquot to avoid repeated freezing and thawing.

Storage: -80 °C

Storage Comment: Best use within three months from the date of receipt of this protein.

Images

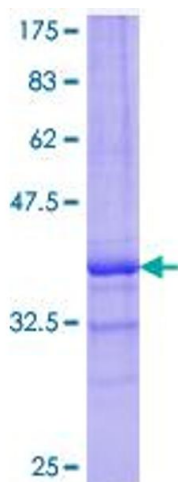


Image 1.