

Datasheet for ABIN1344954

Calcium Responsive Transcription Factor (CARF) (AA 621-718) protein (GST tag)



[Go to Product page](#)

1 Image

Overview

Quantity:	10 µg
Target:	Calcium Responsive Transcription Factor (CARF)
Protein Characteristics:	AA 621-718
Origin:	Human
Source:	Wheat germ
Protein Type:	Recombinant
Purification tag / Conjugate:	GST tag
Application:	Antibody Array (AA), Affinity Purification (AP), ELISA, Western Blotting (WB)

Product Details

Purpose:	ALS2CR8 (Human) Recombinant Protein (Q01)
Sequence:	CLTQNNSTAS TMGNLPEPDQ NLVAMDELVE VGDVEDTGNL EGTVHRILLG DVQTIPIQII DNHSALIEEN PESTISVSQV KQEPKEPALS MEAKNCGL
Characteristics:	Human ALS2CR8 partial ORF (NP_079020, 621 a.a. - 718 a.a.) recombinant protein with GST-tag at N-terminal.
Purification:	in vitro wheat germ expression system

Target Details

Target:	Calcium Responsive Transcription Factor (CARF)
Alternative Name:	ALS2CR8 (CARF Products)

Target Details

Background:	Full Gene Name: amyotrophic lateral sclerosis 2 (juvenile) chromosome region, candidate 8 Synonyms: CARF,DKFZp667N246,FLJ12675,FLJ21579,NYD-SP24
Gene ID:	79800
NCBI Accession:	NM_024744

Application Details

Application Notes:	Optimal working dilution should be determined by the investigator.
Comment:	Preparation method: in vitro, wheat germ expression system Product Quality tested by: 12.5% SDS-PAGE Stained with Coomassie Blue.
Restrictions:	For Research Use only

Handling

Buffer:	50 mM Tris-HCl, 10 mM reduced Glutathione, pH =8.0 in the elution buffer.
Handling Advice:	Aliquot to avoid repeated freezing and thawing.
Storage:	-80 °C
Storage Comment:	Best use within three months from the date of receipt of this protein.

Images

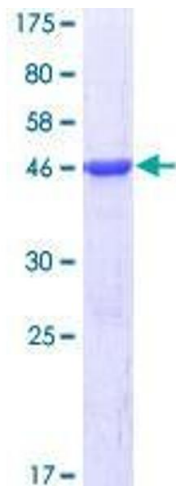


Image 1.