



[Go to Product page](#)

Datasheet for ABIN1344970

AMD1 Protein (AA 1-334) (GST tag)

1 Image

Overview

Quantity:	10 µg
Target:	AMD1
Protein Characteristics:	AA 1-334
Origin:	Human
Source:	Wheat germ
Protein Type:	Recombinant
Purification tag / Conjugate:	This AMD1 protein is labelled with GST tag.
Application:	ELISA, Western Blotting (WB), Antibody Array (AA), Affinity Purification (AP)

Product Details

Purpose:	AMD1 (Human) Recombinant Protein (P01)
Sequence:	MEAAHFFEGT EKLLEWVFSR QQPDANQSG DLRTIPRSEW DILLKDVQCS IISVTKTDKQ EAYVLSSESM FVSKRRFILK TCGTLLLLKA LVPLLKLARD YSGFDSIQSF FYSRKNFMKP SHQGYPHRNF QEEIEFLNAI FPNGAAYCMG RMNSDCWYLY TLDFPESRVI SQPDQTLLEIL MSELDPAVMD QFYMKDGVTA KDVTRRESGIR DLIPGSVIDA TMFNPCGYSM NGMKSDGTYW TIHITPEPEF SYVSFETNLS QTSYDDLIRK VVEVFKPGKF VTTLFVNQSS KCRTVLASPQ KIEGFKRLDC QSAMFNDYNF VFTSFAKKQQ QQQS
Characteristics:	Human AMD1 full-length ORF (NP_001625.2, 1 a.a. - 334 a.a.) recombinant protein with GST-tag at N-terminal.
Purification:	in vitro wheat germ expression system

Target Details

Target:	AMD1
Alternative Name:	AMD1 (AMD1 Products)
Background:	Full Gene Name: adenosylmethionine decarboxylase 1 Synonyms: ADOMETDC,AMD,DKFZp313L1234,FLJ26964,SAMDC
Gene ID:	262
NCBI Accession:	NM_001634
Pathways:	Ribonucleoside Biosynthetic Process

Application Details

Application Notes:	Optimal working dilution should be determined by the investigator.
Comment:	Preparation method: in vitro, wheat germ expression system Product Quality tested by: 12.5% SDS-PAGE Stained with Coomassie Blue.
Restrictions:	For Research Use only

Handling

Buffer:	50 mM Tris-HCl, 10 mM reduced Glutathione, pH =8.0 in the elution buffer.
Handling Advice:	Aliquot to avoid repeated freezing and thawing.
Storage:	-80 °C
Storage Comment:	Best use within three months from the date of receipt of this protein.

Images

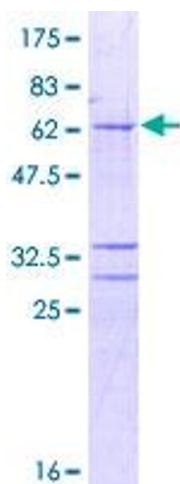


Image 1.