



[Go to Product page](#)

Datasheet for ABIN1345011

Amelotin Protein (AMTN) (AA 1-209) (GST tag)

1 Image

Overview

Quantity:	10 µg
Target:	Amelotin (AMTN)
Protein Characteristics:	AA 1-209
Origin:	Human
Source:	Wheat germ
Protein Type:	Recombinant
Purification tag / Conjugate:	This Amelotin protein is labelled with GST tag.
Application:	ELISA, Western Blotting (WB), Antibody Array (AA), Affinity Purification (AP)

Product Details

Purpose:	AMTN (Human) Recombinant Protein (P01)
Sequence:	MRSTILLFCL LGSTRSLPQL KPALGLPPTK LAPDQGTLPN QQSNQVFPS LSLIPLTQML TLGPDHLHLLN PAAGMTPGTQ THPLTLGGLN VQQQLHPHVL PIFVTQLGAQ GTILSSEELP QIFTSIIHS LFPGGILPTS QAGANPDVQD GSLPAGGAGV NPATQGTPAG RLPTPSGTDD DFAVTTPAGI QRSTHAIEEA TTESANGIQ
Characteristics:	Human AMTN full-length ORF (NP_997722.1, 1 a.a. - 209 a.a.) recombinant protein with GST-tag at N-terminal.
Purification:	in vitro wheat germ expression system

Target Details

Target:	Amelotin (AMTN)
---------	-----------------

Target Details

Alternative Name:	AMTN (AMTN Products)
Background:	Full Gene Name: amelotin Synonyms: MGC148132,MGC148133,UNQ689
Gene ID:	401138
NCBI Accession:	NM_212557

Application Details

Application Notes:	Optimal working dilution should be determined by the investigator.
Comment:	Preparation method: in vitro, wheat germ expression system Product Quality tested by: 12.5% SDS-PAGE Stained with Coomassie Blue.
Restrictions:	For Research Use only

Handling

Buffer:	50 mM Tris-HCl, 10 mM reduced Glutathione, pH =8.0 in the elution buffer.
Handling Advice:	Aliquot to avoid repeated freezing and thawing.
Storage:	-80 °C
Storage Comment:	Best use within three months from the date of receipt of this protein.

Images

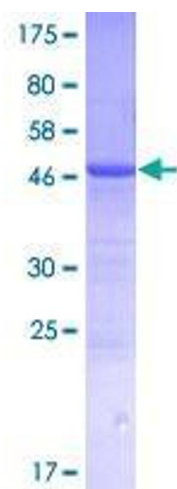


Image 1.