

Datasheet for ABIN1345015
Amylase, alpha 1B (Salivary) (AMY1B) (AA 16-511) protein (GST tag)



[Go to Product page](#)

1 Image

Overview

Quantity:	10 µg
Target:	Amylase, alpha 1B (Salivary) (AMY1B)
Protein Characteristics:	AA 16-511
Origin:	Human
Source:	Wheat germ
Protein Type:	Recombinant
Purification tag / Conjugate:	GST tag
Application:	Antibody Array (AA), Affinity Purification (AP), ELISA, Western Blotting (WB)

Product Details

Purpose:	AMY1B (Human) Recombinant Protein (P02)
Sequence:	QYSSNTQQGR TSIVHLFEWR WVDIALECER YLAPKGFGGV QVSPPNENVA IHNPFRPWWE RYQPVSYKLC TRSGNEDEFR NMVTRCANNVG VRIYVDAVIN HMCGNAVSAG TSSTCGSYFN PGSRDFPAVP YSGWDFNDGK CKTGSGDIEN YNDATQVRDC RLSGLLDLAL GKDYVRSKIA EYMNHLIDIG VAGFRIDASK HMWPGDIKAI LDKLHNLNSN WFPEGSKPFI YQEVIDLGGE PIKSSDYFGN GRVTEFKYGA KLGTVIRKWN GEKMSYLKNW GEGWGFMPSD RALVFVDNHD NQRGHGAGGA SILTFWDARL YKMAVGFMLA HPYGFTRVMS SYRWPRYFEN GKDVNDWVGP PNDNGVTKEV TINPDTTCGN DWVCEHRWRQ IRNMVNFNRV VDGQPFTNWY DNGSNQVAFG RGNRGFIVFN NDDWTFSLTL QTGLPAGTYC DVISGDKING NCTGIKIYVS DDGKAHFSIS NSAEDPFIAI HAESKL
Characteristics:	Human AMY1B full-length ORF (NP_001008219.1, 16 a.a. - 511 a.a.) recombinant protein with GST tag at N-terminal.

Product Details

Purification: in vitro wheat germ expression system

Target Details

Target: Amylase, alpha 1B (Salivary) (AMY1B)

Alternative Name: AMY1B ([AMY1B Products](#))

Background: Full Gene Name: amylase, alpha 1B (salivary)
Synonyms: AMY1

Gene ID: 277

NCBI Accession: [NM_001008218](#)

Application Details

Application Notes: Optimal working dilution should be determined by the investigator.

Comment: Preparation method: in vitro, wheat germ expression system
Product Quality tested by: 12.5% SDS-PAGE Stained with Coomassie Blue

Restrictions: For Research Use only

Handling

Buffer: 50 mM Tris-HCl, 10 mM reduced Glutathione, pH =8.0 in the elution buffer.

Handling Advice: Aliquot to avoid repeated freezing and thawing.

Storage: -80 °C

Storage Comment: Best use within three months from the date of receipt of this protein.

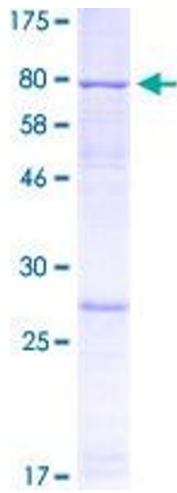


Image 1.