



Datasheet for ABIN1345019  
**AMY2B Protein (AA 1-511) (GST tag)**



[Go to Product page](#)

1 Image

Overview

Quantity:	25 µg
Target:	AMY2B
Protein Characteristics:	AA 1-511
Origin:	Human
Source:	Wheat germ
Protein Type:	Recombinant
Purification tag / Conjugate:	This AMY2B protein is labelled with GST tag.
Application:	ELISA, Western Blotting (WB), Antibody Array (AA), Affinity Purification (AP)

Product Details

Purpose:	AMY2B (Human) Recombinant Protein (P02)
Sequence:	MKFFLLFTI GFCWAQYSPN TQQGRTSIVH LFEWRWVDIA LECERYLAPK GFGGVQVSP NENVAIHNPFPWWERYQPV SYKLCTRSGN EDEFNMVTR CNNVGVRIYV DAVINHMSGN AVSAGTSSSTC GSYFNPGSRD FPAVPYSGWD FNDGKCKTGS GDIENYNDAT QVRDCRLVGL LDLALEKDYV RSKIAEYMNH LIDIGVAGFR LDASKHMWPG DIKAILDKLH NLNSNWFPAG SKPFIYQEVI DLGGPEIKSS DYFGNGRVTE FKYGAKLGTV IRKWNGEKMS YLKNWGEGWG FMPSDRALVF VDNHDNQRGH GAGGASILTF WDARLYKMAV GFMLAHPYGF TRVMSSYRWP RQFQNGNDVN DWVGPPNNG VIKVETINPD TTCGNDWVCE HRWRQIRNMV NFRNVVDGQP FTNWDYDNGSN QVAFGRGNRG FIVFNDDWT FSLTLQTGLP AGTYCDVISG DKINGNCTGI KIYVSDDGKA HFSISNSAED PFIAIHAESK L
Characteristics:	Human AMY2B full-length ORF ( NP_066188.1, 1 a.a. - 511 a.a.) recombinant protein with GST-tag at N-terminal.

## Product Details

---

Purification: in vitro wheat germ expression system

## Target Details

---

Target: AMY2B

Alternative Name: AMY2B ([AMY2B Products](#))

Background: Full Gene Name: amylase, alpha 2B (pancreatic)  
Synonyms: AMY2

Gene ID: 280

NCBI Accession: [NM\\_020978](#)

## Application Details

---

Application Notes: Optimal working dilution should be determined by the investigator.

Comment: Preparation method: in vitro, wheat germ expression system  
Product Quality tested by: 12.5% SDS-PAGE Stained with Coomassie Blue.

Restrictions: For Research Use only

## Handling

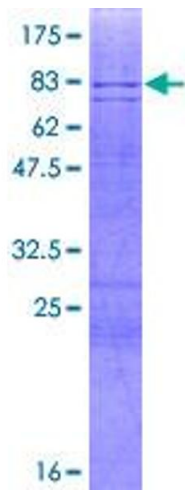
---

Buffer: 50 mM Tris-HCl, 10 mM reduced Glutathione, pH =8.0 in the elution buffer.

Handling Advice: Aliquot to avoid repeated freezing and thawing.

Storage: -80 °C

Storage Comment: Best use within three months from the date of receipt of this protein.



**Image 1.**