

Datasheet for ABIN1345042  
**ANGEL2 Protein (AA 1-286) (GST tag)**



[Go to Product page](#)

1 Image

Overview

Quantity:	25 µg
Target:	ANGEL2
Protein Characteristics:	AA 1-286
Origin:	Human
Source:	Wheat germ
Protein Type:	Recombinant
Purification tag / Conjugate:	This ANGEL2 protein is labelled with GST tag.
Application:	ELISA, Western Blotting (WB), Antibody Array (AA), Affinity Purification (AP)

Product Details

Purpose:	ANGEL2 (Human) Recombinant Protein (P01)
Sequence:	MSYNILSQDL LEDNSHLYRH CRRPVLHWSF RFPNILKEIK HFDADVLCLQ EVQEDHYGAE IRPSLESGLY HCEYKMRTGR KPDGCAICFK HSKFSLLSVN PVEFFRPDIS LLDRDNVGLV LLLQPKIPYA ACPAICVANT HLLYNPRRGD IKLTQLAMLL AEISSVAHQK DGSFCPIVMC GDFNSVPGSP LYSFIKEGKL NYEGLPIGKV SGQEQQSSRGQ RILSIPIWPP NLGISQNCVY EVQQVPKVEK TSDSLTQTQL KQTEVLVTAE KLSSNLQHHE SLSSVY
Characteristics:	Human ANGEL2 full-length ORF ( AAH47469.1, 1 a.a. - 286 a.a.) recombinant protein with GST-tag at N-terminal.
Purification:	in vitro wheat germ expression system

## Target Details

Target:	ANGEL2
Alternative Name:	ANGEL2 ( <a href="#">ANGEL2 Products</a> )
Background:	Full Gene Name: angel homolog 2 (Drosophila) Synonyms: FLJ12793,KIAA0759L
Gene ID:	90806

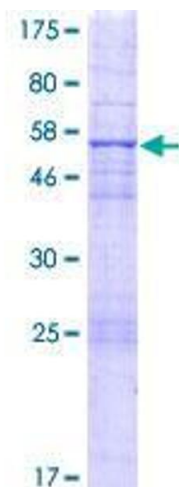
## Application Details

Application Notes:	Optimal working dilution should be determined by the investigator.
Comment:	Preparation method: in vitro, wheat germ expression system Product Quality tested by: 12.5% SDS-PAGE Stained with Coomassie Blue.
Restrictions:	For Research Use only

## Handling

Buffer:	50 mM Tris-HCl, 10 mM reduced Glutathione, pH =8.0 in the elution buffer.
Handling Advice:	Aliquot to avoid repeated freezing and thawing.
Storage:	-80 °C
Storage Comment:	Best use within three months from the date of receipt of this protein.

## Images



**Image 1.**