

Datasheet for ABIN1345086

ANKRD10 Protein (AA 1-220) (GST tag)



[Go to Product page](#)

1 Image

Overview

Quantity:	10 µg
Target:	ANKRD10
Protein Characteristics:	AA 1-220
Origin:	Human
Source:	Wheat germ
Protein Type:	Recombinant
Purification tag / Conjugate:	This ANKRD10 protein is labelled with GST tag.
Application:	ELISA, Western Blotting (WB), Antibody Array (AA), Affinity Purification (AP)

Product Details

Purpose:	ANKRD10 (Human) Recombinant Protein (P01)
Sequence:	MSAAGAGAGV EAGFSSEELL SLRFPLHRAC RDGDLATLCS LLQQTPHAHL ASEDSEFYGWT PVHWAAHFGK LECLVQLVRA GATLNVSTTR YAQTPAHIAA FGGHPQCLVW LIQAGANINK PDCEGETPIH KAARSGSLEC ISALVANGAH VEFISQSSVH SCLPGELQHG VTFDPSVLIQ CLKPEKCQWP DSSRHCTNPG FPRVCPVSLE PPELSSEPFL
Characteristics:	Human ANKRD10 full-length ORF (AAH01727.1, 1 a.a. - 220 a.a.) recombinant protein with GST-tag at N-terminal.
Purification:	in vitro wheat germ expression system

Target Details

Target:	ANKRD10
---------	---------

Target Details

Alternative Name: ANKRD10 ([ANKRD10 Products](#))

Background: Full Gene Name: ankyrin repeat domain 10
Synonyms: DKFZp686B07190,FLJ20093

Gene ID: 55608

Application Details

Application Notes: Optimal working dilution should be determined by the investigator.

Comment: Preparation method: in vitro, wheat germ expression system
Product Quality tested by: 12.5% SDS-PAGE Stained with Coomassie Blue.

Restrictions: For Research Use only

Handling

Buffer: 50 mM Tris-HCl, 10 mM reduced Glutathione, pH =8.0 in the elution buffer.

Handling Advice: Aliquot to avoid repeated freezing and thawing.

Storage: -80 °C

Storage Comment: Best use within three months from the date of receipt of this protein.

Images

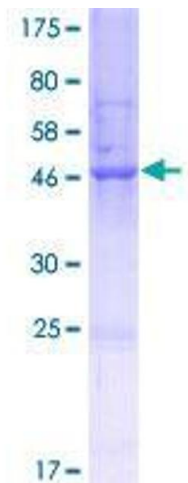


Image 1.