

Datasheet for ABIN1345101

ANKRD22 Protein (AA 1-191) (GST tag)



[Go to Product page](#)

1 Image

Overview

Quantity:	10 µg
Target:	ANKRD22
Protein Characteristics:	AA 1-191
Origin:	Human
Source:	Wheat germ
Protein Type:	Recombinant
Purification tag / Conjugate:	This ANKRD22 protein is labelled with GST tag.
Application:	ELISA, Western Blotting (WB), Antibody Array (AA), Affinity Purification (AP)

Product Details

Purpose:	ANKRD22 (Human) Recombinant Protein (P01)
Sequence:	MGILYSEPIC QAAYQNDFGQ VWRWVKEDSS YANVQDGFNG DTPLICACRR GHVRIVSFLLRNANVNLKN QKERTCLHHA VKKKFTFIDY LLIILLMPVL LIGYFLMVSK TKQNEALVRMLLDAGVEVNA TDCYGCTALH YACEMKNQSL IPLLLEARAD PTIKNKHGES SLDIARRLKF SQIELMLRKA L
Characteristics:	Human ANKRD22 full-length ORF (NP_653191.1, 1 a.a. - 191 a.a.) recombinant protein with GST-tag at N-terminal.
Purification:	in vitro wheat germ expression system

Target Details

Target:	ANKRD22
---------	---------

Target Details

Alternative Name: ANKRD22 ([ANKRD22 Products](#))

Background: Full Gene Name: ankyrin repeat domain 22
Synonyms: MGC22805

Gene ID: 118932

NCBI Accession: [NM_144590](#)

Application Details

Application Notes: Optimal working dilution should be determined by the investigator.

Comment: Preparation method: in vitro, wheat germ expression system
Product Quality tested by: 12.5% SDS-PAGE Stained with Coomassie Blue.

Restrictions: For Research Use only

Handling

Buffer: 50 mM Tris-HCl, 10 mM reduced Glutathione, pH =8.0 in the elution buffer.

Handling Advice: Aliquot to avoid repeated freezing and thawing.

Storage: -80 °C

Storage Comment: Best use within three months from the date of receipt of this protein.

Images

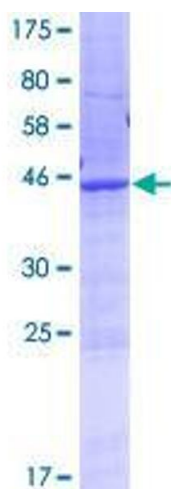


Image 1.