

Datasheet for ABIN1345139

ANKS6 Protein (AA 1-471) (GST tag)



[Go to Product page](#)

1 Image

Overview

Quantity:	25 µg
Target:	ANKS6
Protein Characteristics:	AA 1-471
Origin:	Human
Source:	Wheat germ
Protein Type:	Recombinant
Purification tag / Conjugate:	This ANKS6 protein is labelled with GST tag.
Application:	ELISA, Western Blotting (WB), Antibody Array (AA), Affinity Purification (AP)

Product Details

Purpose:	ANKS6 (Human) Recombinant Protein (P01)
Sequence:	<p>MLLNDPDEL VRLASVCMQ VNKDKGRPSH QPPLPHSKVR QPWSIPVLPD DKGGLKSWWN</p> <p>RMSNRFRKLK LMQTLPRGLS SNQPLPFSDE PEPALDSTMR AAPQDKTSRS ALPDAAPVTK</p> <p>DNGPGSTRGE KEDTLTMTL RINGAPLTRL SDKLVKAVIPP FLPPSSFELW SDRSRTRHN</p> <p>GKADPMKTAL PQRASRGHPV GGGTDTTPV RPKVFPSPR SPASSANSGN FNHSPHSSGG</p> <p>SSGIGVSRHG GELLNRSGGS IDNVLSQIAA QRKKAAGLLE QKPSHRSSPV GPAGSSPSE</p> <p>LPASPAGGSA PVGKKLETSK RPPSGTSTTS KSTSPTLTPS PSPKGHTAES SVSSSSSHRQ</p> <p>SKSSGGSSSG TITDEDELTG ILKKSLEKY QPIFEEQVD MEAFLTLTDG DLKELGIKTD</p> <p>GSRQQILAAI SELNAGKGRE RQILQETIHN FHSSFESSAS NTRAPGNMPC A</p>
Characteristics:	Human ANKS6 full-length ORF (AAH64367.1, 1 a.a. - 471 a.a.) recombinant protein with GST-tag at N-terminal.

Product Details

Purification: in vitro wheat germ expression system

Target Details

Target: ANKS6

Alternative Name: ANKS6 ([ANKS6 Products](#))

Background: Full Gene Name: ankyrin repeat and sterile alpha motif domain containing 6
Synonyms: ANKRD14,DKFZp686D24121,DKFZp781I0117,MGC70366,SAMD6

Gene ID: 203286

Application Details

Application Notes: Optimal working dilution should be determined by the investigator.

Comment: Preparation method: in vitro, wheat germ expression system
Product Quality tested by: 12.5% SDS-PAGE Stained with Coomassie Blue.

Restrictions: For Research Use only

Handling

Buffer: 50 mM Tris-HCl, 10 mM reduced Glutathione, pH =8.0 in the elution buffer.

Handling Advice: Aliquot to avoid repeated freezing and thawing.

Storage: -80 °C

Storage Comment: Best use within three months from the date of receipt of this protein.

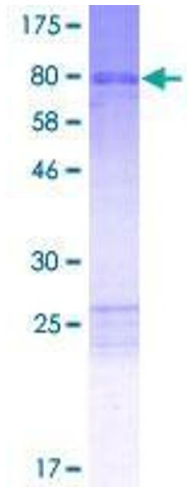


Image 1.