



[Go to Product page](#)

Datasheet for ABIN1345257

AP3S1 Protein (AA 1-193) (GST tag)

1 Image

Overview

Quantity:	10 µg
Target:	AP3S1
Protein Characteristics:	AA 1-193
Origin:	Human
Source:	Wheat germ
Protein Type:	Recombinant
Purification tag / Conjugate:	This AP3S1 protein is labelled with GST tag.
Application:	ELISA, Western Blotting (WB), Antibody Array (AA), Affinity Purification (AP)

Product Details

Purpose:	AP3S1 (Human) Recombinant Protein (P01)
Sequence:	MIKAILIFNN HGKPRLSKFY QPYSEDTQQQ IIRETFHLVS KRDENVCNFL EGGLLIGGSD NKLIYRHYAT LYFVFCVDSS ESELGILDLI QVFVETLDKC FENVCELDLI FHVDKVHNIL AEMVMGGMVL ETNMNEIVTQ IDAQNKLEKS EAGLAGAPAR AVSAVKNMNL PEIPRNINIG DISIKVPNLP SFK
Characteristics:	Human AP3S1 full-length ORF (AAH00804.1, 1 a.a. - 193 a.a.) recombinant protein with GST-tag at N-terminal.
Purification:	in vitro wheat germ expression system

Target Details

Target:	AP3S1
---------	-------

Target Details

Alternative Name:	AP3S1 (AP3S1 Products)
Background:	Full Gene Name: adaptor-related protein complex 3, sigma 1 subunit Synonyms: CLAPS3,Sigma3A
Gene ID:	1176

Application Details

Application Notes:	Optimal working dilution should be determined by the investigator.
Comment:	Preparation method: in vitro, wheat germ expression system Product Quality tested by: 12.5% SDS-PAGE Stained with Coomassie Blue.
Restrictions:	For Research Use only

Handling

Buffer:	50 mM Tris-HCl, 10 mM reduced Glutathione, pH =8.0 in the elution buffer.
Handling Advice:	Aliquot to avoid repeated freezing and thawing.
Storage:	-80 °C
Storage Comment:	Best use within three months from the date of receipt of this protein.

Images

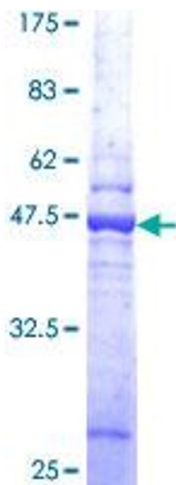


Image 1.