



[Go to Product page](#)

Datasheet for ABIN1345268

AP4M1 Protein (AA 1-453) (GST tag)

1 Image

Overview

Quantity:	10 µg
Target:	AP4M1 (Ap4m1)
Protein Characteristics:	AA 1-453
Origin:	Human
Source:	Wheat germ
Protein Type:	Recombinant
Purification tag / Conjugate:	This AP4M1 protein is labelled with GST tag.
Application:	ELISA, Western Blotting (WB), Antibody Array (AA), Affinity Purification (AP)

Product Details

Purpose:	AP4M1 (Human) Recombinant Protein (P01)
Sequence:	MISQFFILSS KGDPLIYKDF RGDSSGGRDVA ELFYRKLTLG PGDESPVVMH HHGRHFHIIH HSGLYLVVTT SENVSPFSL ELLSRLATLL GDYCGSLGEG TISRIVALVY ELLDEVLDYG YVQTTSTEML RNFIQTEAVV SKPFSLFDLS SVGLFGAETQ QSKVAPSSAA SRPVLSSRSD QSQKNEVFLD VVERLSVLIA SNGSLLKVDV QGEIRLKSFL PSGSEMRIGL TEEFCVKGSE LRGYGPGIRV DEVSFHSSVN LDEFESHRI LQPPQGELT VMRYQLSDDL PSPLPFRLLP SVQWDRGSGR LQVYLKLRCD LLSKSQALNV RLHLPLPRGV VLSLQELSSP EQKAELAEGA LRWDLPRVQG GSQLSGLFQM DVPGPPGPPS HGLSTSASPL GLGPASLSFE LPRHTCSGLQ VRFLRLAFRP CGNANPHKWW RHLSHSDAYV IRI
Characteristics:	Human AP4M1 full-length ORF (AAH18705, 1 a.a. - 453 a.a.) recombinant protein with GST-tag at N-terminal.

Product Details

Purification: in vitro wheat germ expression system

Target Details

Target: AP4M1 (Ap4m1)

Alternative Name: AP4M1 ([Ap4m1 Products](#))

Background: Full Gene Name: adaptor-related protein complex 4, mu 1 subunit
Synonyms: MU-4,MU-ARP2

Gene ID: 9179

Application Details

Application Notes: Optimal working dilution should be determined by the investigator.

Comment: Preparation method: in vitro, wheat germ expression system
Product Quality tested by: 12.5% SDS-PAGE Stained with Coomassie Blue.

Restrictions: For Research Use only

Handling

Buffer: 50 mM Tris-HCl, 10 mM reduced Glutathione, pH =8.0 in the elution buffer.

Handling Advice: Aliquot to avoid repeated freezing and thawing.

Storage: -80 °C

Storage Comment: Best use within three months from the date of receipt of this protein.

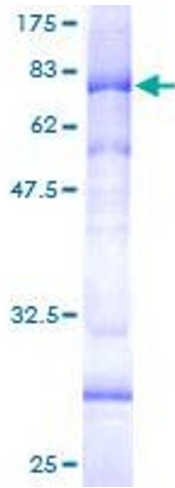


Image 1.