

Datasheet for ABIN1345270

## AP4M1 Protein (AA 354-453) (GST tag)



[Go to Product page](#)

### 1 Image

#### Overview

Quantity:	10 µg
Target:	AP4M1 (Ap4m1)
Protein Characteristics:	AA 354-453
Origin:	Human
Source:	Wheat germ
Protein Type:	Recombinant
Purification tag / Conjugate:	This AP4M1 protein is labelled with GST tag.
Application:	ELISA, Western Blotting (WB), Antibody Array (AA), Affinity Purification (AP)

#### Product Details

Purpose:	AP4M1 (Human) Recombinant Protein (Q01)
Sequence:	AELAEGALRW DLPRVQGSQ LSGLFQMDVP GPPGPPSHGL STSASPLGLG PASLSFELPR HTCSGLQVRF LRLAFRPCGN ANPHKWVRHL SHSDAYVIRI
Characteristics:	Human AP4M1 partial ORF ( NP_004713, 354 a.a. - 453 a.a.) recombinant protein with GST-tag at N-terminal.
Purification:	in vitro wheat germ expression system

#### Target Details

Target:	AP4M1 (Ap4m1)
Alternative Name:	AP4M1 ( <a href="#">Ap4m1 Products</a> )

## Target Details

Background:	Full Gene Name: adaptor-related protein complex 4, mu 1 subunit Synonyms: MU-4,MU-ARP2
Gene ID:	9179
NCBI Accession:	<a href="#">NM_004722</a>

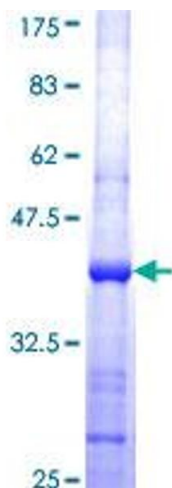
## Application Details

Application Notes:	Optimal working dilution should be determined by the investigator.
Comment:	Preparation method: in vitro, wheat germ expression system Product Quality tested by: 12.5% SDS-PAGE Stained with Coomassie Blue.
Restrictions:	For Research Use only

## Handling

Buffer:	50 mM Tris-HCl, 10 mM reduced Glutathione, pH =8.0 in the elution buffer.
Handling Advice:	Aliquot to avoid repeated freezing and thawing.
Storage:	-80 °C
Storage Comment:	Best use within three months from the date of receipt of this protein.

## Images



**Image 1.**