

Datasheet for ABIN1345346
APOBEC2 Protein (AA 125-224) (GST tag)



[Go to Product page](#)

1 Image

Overview

Quantity:	10 µg
Target:	APOBEC2
Protein Characteristics:	AA 125-224
Origin:	Human
Source:	Wheat germ
Protein Type:	Recombinant
Purification tag / Conjugate:	This APOBEC2 protein is labelled with GST tag.
Application:	ELISA, Western Blotting (WB), Antibody Array (AA), Affinity Purification (AP)

Product Details

Purpose:	APOBEC2 (Human) Recombinant Protein (Q01)
Sequence:	SSPCAACADR IIKTLSKTKN LRLILVGRL FMWEEPEIQA ALKKLKEAGC KLRIMKPQDF EYVWQNFVEQ EEGESKAFQP WEDIQENFLY YEEKLADILK
Characteristics:	Human APOBEC2 partial ORF (NP_006780.1, 125 a.a. - 224 a.a.) recombinant protein with GST-tag at N-terminal.
Purification:	in vitro wheat germ expression system

Target Details

Target:	APOBEC2
Alternative Name:	APOBEC2 (APOBEC2 Products)

Target Details

Background:	Full Gene Name: apolipoprotein B mRNA editing enzyme, catalytic polypeptide-like 2 Synonyms: ARCD1,ARP1
Gene ID:	10930
NCBI Accession:	NM_006789

Application Details

Application Notes:	Optimal working dilution should be determined by the investigator.
Comment:	Preparation method: in vitro, wheat germ expression system Product Quality tested by: 12.5% SDS-PAGE Stained with Coomassie Blue.
Restrictions:	For Research Use only

Handling

Buffer:	50 mM Tris-HCl, 10 mM reduced Glutathione, pH =8.0 in the elution buffer.
Handling Advice:	Aliquot to avoid repeated freezing and thawing.
Storage:	-80 °C
Storage Comment:	Best use within three months from the date of receipt of this protein.

Images

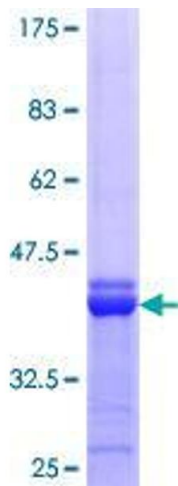


Image 1.